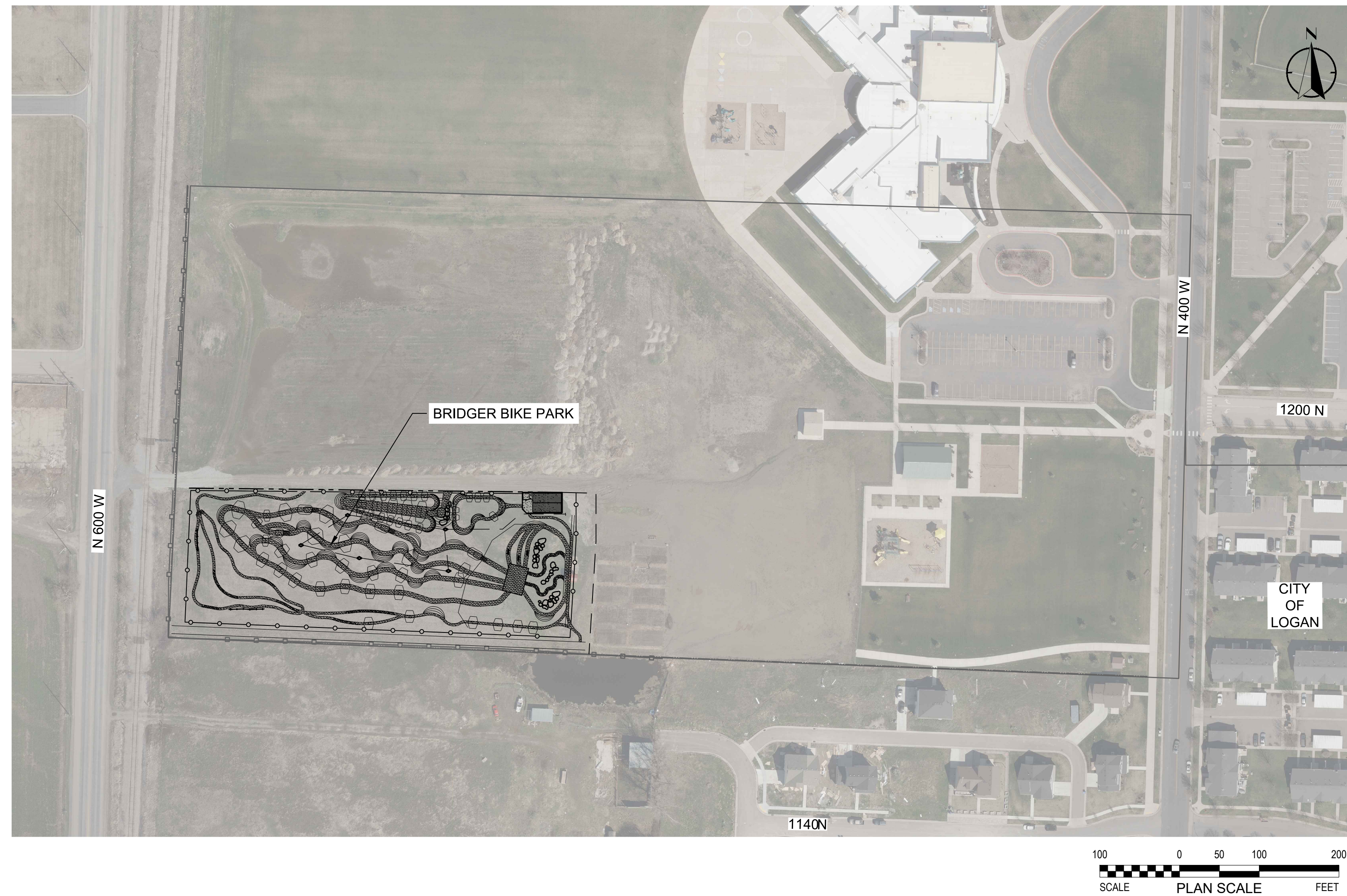


BRIDGER BIKE PARK

LOGAN, UTAH

CONSTRUCTION DOCUMENT SET

VICINITY MAP



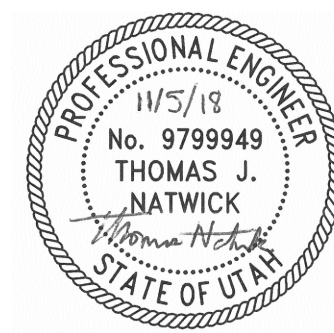
SHEET INDEX

SHEET NO.	DWG NO.	SHEET NAME
01	CV01	TITLE SHEET
02	GN01	GENERAL NOTES
03	C01	SITE PLAN - TRAIL FEATURES
04	CG01	GRADING PLAN
05	EC01	EROSION CONTROL PLAN
06-08	DT01-DT03	SITE DETAILS

CONTACTS

FIRM	DISCIPLINE	CONTACT
C2 CONSULTING	BIKE PARK DESIGN	CHRIS KEHMEIER (303) 868-8082
ALTA PLANNING AND DESIGN 8 EAST BROADWAY, SUITE 203 SALT LAKE CITY, UT 84111	SITE DESIGN	DAVE FOSTER (801) 746-1435

DESIGNED:	CRW	REVISIONS
REVIEWED:	TJN	NO DATE ITEM
DRAWN:	CRW	
2017-384	11/5/18	
PROJECT NO.	DATE	
SCALE	2017-384 General Notes	
	FILE	



Bridger Bike Park

Logan, UT

COVER SHEET

SHEET NO.

CV01
01 OF 08

CONSTRUCTION NOTES:

1. TRAIL ALIGNMENTS
 - A. THE TRAIL PLAN IS DIAGRAMMATIC AND DOES NOT REFLECT AN EXACT FINAL ALIGNMENT OR DIMENSION. FOR EACH TRAIL, TRAIL IMPROVEMENT, ARMORING, OR TRAIL FEATURE, ALL TRAIL AND TRAIL IMPROVEMENT LOCATIONS AND DIMENSIONS ARE APPROXIMATE.
 - B. TRAIL CONTRACTOR SHALL CREATE AN EXACT FINAL ALIGNMENT AND LOCATION FOR EACH TRAIL AND TRAIL FEATURE. THE ALIGNMENTS AND LOCATIONS SHALL MEET APPROPRIATE SPECIFICATIONS AS PROVIDED IN THE CONSTRUCTION DOCUMENTS. TRAIL ALIGNMENTS MUST BE FLAGGED BY CONTRACTOR AND APPROVED BY DEPARTMENT PROJECT MANAGER IN THE FIELD PRIOR TO CONSTRUCTION.
 - C. THE ALIGNMENT, LOCATION, DESIGN, AND CONSTRUCTION OF EACH INDIVIDUAL TRAIL SHALL CONFORM TO THE SPECIFICATIONS, INTENT, CHARACTER, AND DESCRIPTION FOR THAT SPECIFIC TRAIL AS DESCRIBED IN THE CONSTRUCTION DOCUMENTS.
 - D. IF CONFLICTS ARISE IN TRAIL ALIGNMENTS, FEATURES, ARMORING, VEGETATION, LANDSCAPING, IRRIGATION, AND/OR OTHER ITEMS, TRAIL CONTRACTOR IS REQUIRED TO IMMEDIATELY CONTACT DEPARTMENT PROJECT MANAGER FOR RESOLUTION BEFORE PROCEEDING.
 - E. THE TRAIL CONTRACTOR SHALL WORK WITH THE DEPARTMENT PROJECT MANAGER TO IDENTIFY THE NEED TO FURTHER REFINE OR ADJUST CONSTRUCTION NOTES, LOCATION OR TYPES OF TRAILS OR FEATURES, AND MAKE MINOR ADJUSTMENTS AT THE TIME OF CONSTRUCTION.
2. TECHNICAL TRAIL FEATURES (TTF)
 - A. THE FEATURE LOCATION PLANS ARE DIAGRAMMATIC AND DO NOT REFLECT AN EXACT FINAL ALIGNMENT, LOCATION, OR DIMENSION FOR EACH FEATURE. THE TRAIL CONTRACTOR SHALL DETERMINE EXACT FINAL LOCATION AND DIMENSION OF ALL TTF BASED UPON FINAL TRAIL ALIGNMENT, TRAIL FLOW, CHARACTER, DIFFICULTY, AND SURROUNDING TERRAIN. IT IS THE TRAIL CONTRACTOR'S RESPONSIBILITY TO ENSURE THAT FINAL DIMENSIONS OF TTF (HEIGHT, LENGTH, RADIUS, WIDTH, ETC.) FLOW.
 - B. TTF PLACEMENTS MAY (BUT ARE NOT REQUIRED TO) INCLUDE AN OPTIONAL LINE OR BYPASS TRAIL THAT PROVIDES USERS WITH AN OPEN AND OBVIOUS ROUTE TO AVOID THE TTF. THE TRAIL CONTRACTOR SHALL DETERMINE THE FINAL ALIGNMENT FOR EACH OPTIONAL LINE OR BYPASS BASED UPON THE TTF, TRAIL FLOW, DIFFICULTY, AND SURROUNDING TERRAIN.
 - C. DIRT TTF SHALL BE INCIDENTAL TO THE UNIT RATE FOR TRAIL CONSTRUCTION.
 - D. MANUFACTURED TTF AND THEIR FOOTINGS SHALL BE ADDITIONAL TO THE UNIT RATE FOR TRAIL CONSTRUCTION.
 - E. ALL MANUFACTURED TTF WILL BE SOURCED FROM INSURED BIKE PARK FEATURE MANUFACTURER. FEATURE MANUFACTURER SHALL HOLD PRODUCT LIABILITY INSURANCE.
3. TURNS
 - A. TURNS ON THE TRAIL SYSTEM SHALL BE CAMBERED/BANKED/BERMEO AS NECESSARY ACCORDING TO THE SPECIFICATIONS, DRAWINGS, INTENDED RIDING EXPERIENCE, TRAIL FLOW, TRAIL SPEED, AND DIFFICULTY. TURN CONSTRUCTION SHALL BE INCIDENTAL TO THE UNIT RATE FOR TRAIL CONSTRUCTION.
4. VERTICAL UNDULATIONS
 - A. THE TRAILS SHOULD HAVE VERTICAL UNDULATIONS SUCH AS ROLLERS, JUMPS, GRADE REVERSALS, AND DIPS AS NECESSARY ACCORDING TO THE SPECIFICATIONS, DRAWINGS, INTENDED RIDING EXPERIENCE, TRAIL FLOW, TRAIL SPEED, AND DIFFICULTY. SUCH VERTICAL UNDULATIONS SHALL BE INCIDENTAL TO THE UNIT RATE FOR TRAIL CONSTRUCTION.
5. ROCK ARMORING
 - A. ROCK ARMORING OF VARIOUS TYPES IS INTENDED TO HARDEN THE TRAIL SURFACE, PROVIDE A MORE DIVERSE TRAIL SURFACE, ACT AS A "RUMBLE-STRIP" NEAR INTERSECTIONS, OR OTHERWISE TO ENHANCE THE RIDING EXPERIENCE AND TRAIL SUSTAINABILITY.
 - B. THE ROCK-ARMORING PLAN IS DIAGRAMMATIC AND DOES NOT REFLECT AN EXACT FINAL LOCATION OR DIMENSION FOR EACH SECTION OF ARMORING. NOT ALL POTENTIAL ARMORING SEGMENTS OR LOCATIONS ARE INDICATED. THE TRAIL CONTRACTOR SHALL DETERMINE THE EXACT FINAL LOCATION AND DIMENSION OF ALL ARMORING BASED UPON THEIR OWN EXPERTISE, FINAL TRAIL ALIGNMENT, TRAIL GRADE, TRAIL FLOW, CHARACTER, DIFFICULTY, AND SURROUNDING TERRAIN.
6. LANDSCAPE BOULDERS
 - A. TRAIL CONTRACTOR SHALL FURNISH AND INSTALL LANDSCAPE BOULDERS ON THE TRAIL SYSTEM WHERE NECESSARY TO HELP ANCHOR THE APEX OF TURNS, HELP DEFINE AND IMPROVE INTERSECTIONS, PREVENT SHORT-CUTTING, AND TO OTHERWISE ENHANCE THE EDGE OF THE TRAIL CORRIDOR WHERE NECESSARY. LANDSCAPE BOULDERS SHALL BE NATIVE ROCK PARTIALLY BURIED INTO SOIL A MINIMUM 6 INCHES BELOW GRADE. BOULDER LOCATIONS SHALL BE DETERMINED BY TRAIL CONTRACTOR BASED UPON THEIR OWN EXPERTISE.
7. FILL MATERIAL
 - A. FILL NEEDED FOR TRAIL CONSTRUCTION, BERMS, ROLLERS, OR OTHER FEATURES MAY BE GENERATED DURING TRAIL EXCAVATION, BORROWED FROM SURROUNDING LANDSCAPE WHERE APPROPRIATE, BORROWED FROM ONSITE STOCKPILES, OR IMPORTED FROM THE LOCAL AREA IF NECESSARY. FILL MATERIAL SHALL BE UNCONTAMINATED AND FREE OF ORGANIC MATERIAL, TRASH, AND OTHER OBJECTS. FILL MATERIAL SHALL BE PLACED, GRADED, AND COMPACTED BY TRAIL CONTRACTOR IN A MANNER THAT WILL SUPPORT THE INTENDED USE. THE NON-RIDING SURFACES OF BERMS, ROLLERS, LANDSCAPE MOUNDS, OR OTHER TERRAIN ENHANCEMENTS CREATED BY THE TRAIL CONTRACTOR SHALL NOT EXCEED A 2:1 SLOPE.
9. BOULDERS
 - A. BOULDERS AND ROCKS USED FOR TTF OR LANDSCAPING SHALL HAVE A CHARACTER AND SHAPE CONSISTENT WITH NATIVE LANDSCAPE ROCK. TO THE GREATEST EXTENT POSSIBLE, ROCKS SHALL BE PLACED IN THEIR FINAL LOCATIONS WITH THE LICHEN OR WEATHERED SIDE EXPOSED.
10. COMPACTION
 - A. ALL TRAIL SUB GRADES, TRAIL TREADS, TRAIL SURFACING MATERIALS, BACKSLOPES, ROLLERS, BERMS, FILL, AND TERRAIN ENHANCEMENTS SHALL BE COMPACTED ACCORDING TO COMMONLY ACCEPTED BEST PRACTICES AND IN A MANNER THAT WILL SUPPORT THE INTENDED USE.
11. VOLUNTEERS
 - A. VOLUNTEER INVOLVEMENT IS A POSSIBLE COMPONENT OF THIS PROJECT. IT IS EXPECTED THAT VOLUNTEERS WILL BE ON THE CONSTRUCTION SITE PERIODICALLY TO ASSIST WITH TRAIL BUILDING ACTIVITIES AND THAT THE TRAIL CONTRACTOR MAY BE ASKED TO PROVIDE ASSISTANCE IN THE SCHEDULING AND COORDINATION OF VOLUNTEERS.
12. QUANTITIES
 - A. FOR ALL SPECIFICATIONS THAT CONTAIN MORE OR LESS QUANTITIES, IT SHALL BE UNDERSTOOD AND AGREED THAT QUANTITIES LISTED IN THE SPECIFICATIONS ARE ESTIMATED ONLY AND MAY BE INCREASED OR DECREASED IN ACCORDANCE WITH THE REQUIREMENTS OF THE OWNER.
13. TRAIL SURFACING MATERIAL
 - A. THE INTENT OF THE TRAIL SURFACING MATERIAL IS TO COVER THE EXISTING SOILS WITH A WELL-BALANCED SURFACE THAT FACILITATES DRAINAGE, COMPACTS WELL, AND THAT PERFORMS REASONABLY IN BOTH WET AND DRY WEATHER CONDITIONS. TRAIL SURFACING MATERIAL SHALL BE INCIDENTAL TO THE UNIT RATE FOR TRAIL CONSTRUCTION. DESIRED CHARACTERISTICS INCLUDE:
 - WELL GRADED MIXTURE OF PARTICLE SIZES
 - DRAINS WELL AND FACILITATES SHEET DRAINAGE
 - STAYS FIRM AND COHESIVE WHEN MOIST
 - STAYS FIRM AND COHESIVE WHEN DRY
 - RESISTS SHEAR FORCES CREATED BY BICYCLE TIRES (CORNERING, BRAKING, AND ACCELERATING)
 - REASONABLY PLIABLE IN ORDER TO SHAPE TRAIL SURFACE AND PERFORM MAINTENANCE
 - NATURAL FEEL, SOIL-LIKE TEXTURE
 - B. MATERIAL SHALL BE NATURAL, UNCONTAMINATED, AND FREE OF ORGANIC MATERIAL, VEGETATION, WASTE, RECYCLED CONCRETE, ASPHALT, FROZEN MATERIALS, AND OTHER DELETERIOUS MATTER.
14. CONTRACTOR SHALL VERIFY AND COORDINATE FINISH GRADES WITH RELATED SITE IMPROVEMENTS. CONTRACTOR SHALL IMMEDIATELY REPORT ANY CONFLICTS OR DISCREPANCIES TO THE DEPARTMENT PROJECT MANAGER.
15. THE CONTRACTOR SHALL BE RESPONSIBLE FOR CONFIRMING GROUND ELEVATIONS AND OVERALL TOPOGRAPHY OF THE SITE, AS WELL AS, ALL SITE DIMENSIONS PRIOR TO START OF CONSTRUCTION. THE CONTRACTOR SHALL IMMEDIATELY NOTIFY THE DEPARTMENT PROJECT MANAGER IN WRITING OF ANY DIFFERENCES IN TOPOGRAPHY OR SITE DIMENSION THAT DIFFER FROM THOSE SHOWN ON THE PLANS.

16. THE DRAWINGS AND SPECIFICATIONS DESCRIBE IN GENERAL THE QUALITY AND CHARACTER OF THE MATERIALS, SHAPE AND CONFIGURATION OF IMPROVEMENTS AND THE DESIGN INTENT OF THE COMPLETED, INSTALLED WORK. MISCELLANEOUS ITEMS OF WORK, MATERIAL, EQUIPMENT, ETC. NECESSARY TO COMPLETE THE INSTALLATION SHALL BE PROVIDED BY THE CONTRACTOR WHETHER OR NOT MENTIONED IN THE SPECIFICATIONS OR SHOWN ON THE DRAWINGS. SPECIFIC NOTES AND DETAILS SHALL TAKE PRECEDENCE OVER GENERAL NOTES AND TYPICAL DETAILS.
17. CONTRACTOR SHALL PERFORM ALL WORK IN ACCORDANCE WITH ALL APPLICABLE LOCAL, STATE AND/OR NATIONAL BUILDING CODES AND REQUIREMENTS.
18. THE LOCATION OF EXISTING UNDERGROUND UTILITIES ARE SHOWN ON THE PLANS IN AN APPROXIMATE WAY. THE CONTRACTOR SHALL BE RESPONSIBLE FOR LOCATING EXISTING UTILITIES PRIOR TO COMMENCING AND DURING THE CONSTRUCTION. THE CONTRACTOR AGREES TO BE FULLY RESPONSIBLE FOR ANY AND ALL DAMAGES WHICH RESULT FROM HIS FAILURE TO ACCURATELY LOCATE AND PRESERVE ANY AND ALL UNDERGROUND UTILITIES. THE CONTRACTOR SHALL CALL 811 TO LOCATE ALL EXISTING UNDERGROUND UTILITIES.
19. THE CONTRACTOR SHALL CLEAN UP THE SITE AFTER CONSTRUCTION SO THAT IT IS IN A CONDITION EQUAL TO OR BETTER THAN THAT WHICH EXISTED PRIOR TO CONSTRUCTION.
20. THE CONTRACTOR SHALL BE REQUIRED TO OBTAIN ALL NECESSARY PERMITS PRIOR TO CONSTRUCTION.
21. THE CONTRACTOR SHALL COORDINATE THE LOCATIONS OF DRY UTILITY FACILITIES (POWER, CABLE, PHONE, TV) WITH CORRESPONDING UTILITY PROVIDERS.
22. RIGHT-OF-WAY BOUNDARIES SHOWN ON PLANS ARE APPROXIMATE BASED ON GIS DATA. CONTRACTOR TO VERIFY PRIOR TO CONSTRUCTION.
23. ALL FENCES, IRRIGATION FACILITIES, UTILITY SERVICES, LANDSCAPING, AND OTHER MISCELLANEOUS FACILITIES, REMOVED OR ALTERED DURING CONSTRUCTION SHALL BE REPLACED IN-KIND OR RESTORED TO THEIR ORIGINAL CONDITION PRIOR TO FINAL COMPLETION. THIS WORK SHALL BE INCIDENTAL TO THE PROJECT, AND NO PAYMENT WILL BE MADE UNLESS ITEM(S) ARE SPECIFICALLY LISTED ON THE BID FORM OR SUMMARY OF QUANTITIES.

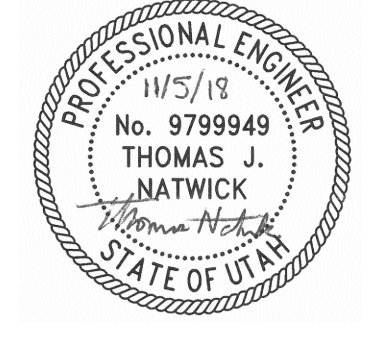
ABBREVIATIONS

&	And
@	At
AD	Area Drain
APPROX	Approximately
CONST	Construction
CONTR	Contractor
DWG	Drawing
EX	Existing
FG	Finish Grade
FS	Finish Surface
HP	High Point
INV	Invert
LF	Linear Feet
LP	Low Point
MAX	Maximum
MIN	Minimum
MTN	Mountain
NO	Number
NTS	Not To Scale
OC	On Center
POC	Point Of Connection
RW	Right-of-Way
RCP	Reinforced Concrete Pipe
TP	Tangent Point
TTF	Technical Trail Feature
TYP	Typical
W/	With
W/O	Without

PERFORMANCE SPECIFICATIONS:

- ALL TRAIL CONSTRUCTION SHALL COMPLY WITH THE SPECIFICATIONS, DRAWINGS, REQUIREMENTS, AND DESIGN INTENT PRESCRIBED IN THE CONSTRUCTION AND CONTRACT DOCUMENTS. ADDITIONAL RESOURCES INCLUDE "TRAIL SOLUTIONS" (2004) AND "MANAGING MOUNTAIN BIKING" (2007). MODIFICATIONS SHALL BE APPROVED BY DEPARTMENT PROJECT MANAGER.
1. COMPLETED PRODUCTS SHALL REFLECT PROFESSIONAL WORKMANSHIP IN APPEARANCE, QUALITY, AND ATTENTION TO DETAIL. TRAILS AND FEATURES SHALL BE WELL INTEGRATED INTO SITE, AESTHETICALLY PLEASING IN APPEARANCE, AND WELL-SHAPED, CRAFTED, AND FINISHED ACCORDING TO COMMONLY ACCEPTED BEST PRACTICES FOR HIGH QUALITY AND SUSTAINABLE MOUNTAIN BIKING TRAILS. WORK MUST BE COMPLETED TO THE SATISFACTION OF THE DEPARTMENT PROJECT MANAGER.
 2. SHOULD THE CONTRACTOR DISCOVER DISCREPANCIES IN THE SPECIFICATIONS, THE MATTER SHALL BE AT ONCE BROUGHT TO THE ATTENTION OF THE DEPARTMENT PROJECT MANAGER, AND THE DISCREPANCIES CORRECTED BEFORE PROCEEDING FURTHER.
 3. TRAIL CONTRACTOR SHALL BE RESPONSIBLE FOR ANY COORDINATION WITH GENERAL CONTRACTOR AND SUBCONTRACTORS AS REQUIRED TO COMPLETE ALL OPERATIONS.
 4. TEST RIDING: TRAIL CONTRACTOR SHALL THOROUGHLY TEST RIDE ALL TRAILS AND TRAIL FEATURES, BY BIKE WITH APPROPRIATE EXPERT RIDER, TO ENSURE THE SPECIFIED RIDING EXPERIENCE, DESIGN, FLOW, RHYTHM, CHARACTER, DIFFICULTY, AND SPECIFICATIONS ARE MET. TESTING SHALL BE PERFORMED DURING THE TRAIL ALIGNMENT AND TRAIL FEATURE LOCATION PROCESS, AS WELL AS DURING CONSTRUCTION AND FOLLOWING CONSTRUCTION, TO THE EXTENT POSSIBLE AND IN CONSULTATION WITH DEPARTMENT PROJECT MANAGER. TRAILS AND FEATURES SHALL BE MODIFIED AND CORRECTED AS NECESSARY UNTIL PERFORMANCE SPECIFICATIONS ARE MET.
 5. TRAIL CONTRACTOR SHALL LEAVE TRAILS AND THE ADJACENT AREA IN A FINISHED AND NATURAL-LOOKING CONDITION AND MINIMIZE DISTURBANCE TO PERMANENT EXISTING VEGETATION TO THE EXTENT POSSIBLE IN COORDINATION WITH GENERAL CONTRACTOR, TOPSOIL SPREADING, AND IRRIGATION AND LANDSCAPE INSTALLATION.
 6. ALL EXCAVATED MATERIAL GENERATED DURING TRAIL CONSTRUCTION MUST BE USED IN THE TRAIL, OR DISPERSED AND BLENDED INTO SURROUNDING TERRAIN, OR REMOVED. NO PILES OF EXCAVATED MATERIAL GREATER THAN 6 INCHES DEPTH SHALL BE LEFT BEHIND.
 7. THE TRAIL CONTRACTOR SHALL BE RESPONSIBLE FOR FINE GRADING AND POSITIVE DRAINAGE AWAY FROM ALL TRAILS AND TRAIL FEATURES. NO IMPOUNDMENTS NOR PONDING OF SURFACE WATER WITHIN THE BIKE PARK SHALL BE ALLOWED. THE POSITIVE DRAINAGE SHALL MEET THE SLOPE AND INTENT AS SHOWN ON THE GRADING PLAN.
 8. WHERE NECESSARY, TRAIL CONTRACTOR MAY CONSTRUCT SHALLOW POROUS DETENTION BASINS ADJACENT TO THE TRAIL TO MANAGE SURFACE WATER DRAINAGE, PROVIDED THEY ARE CONSTRUCTED IN AN APPROPRIATE MANNER AND DO NOT CREATE A HAZARD.

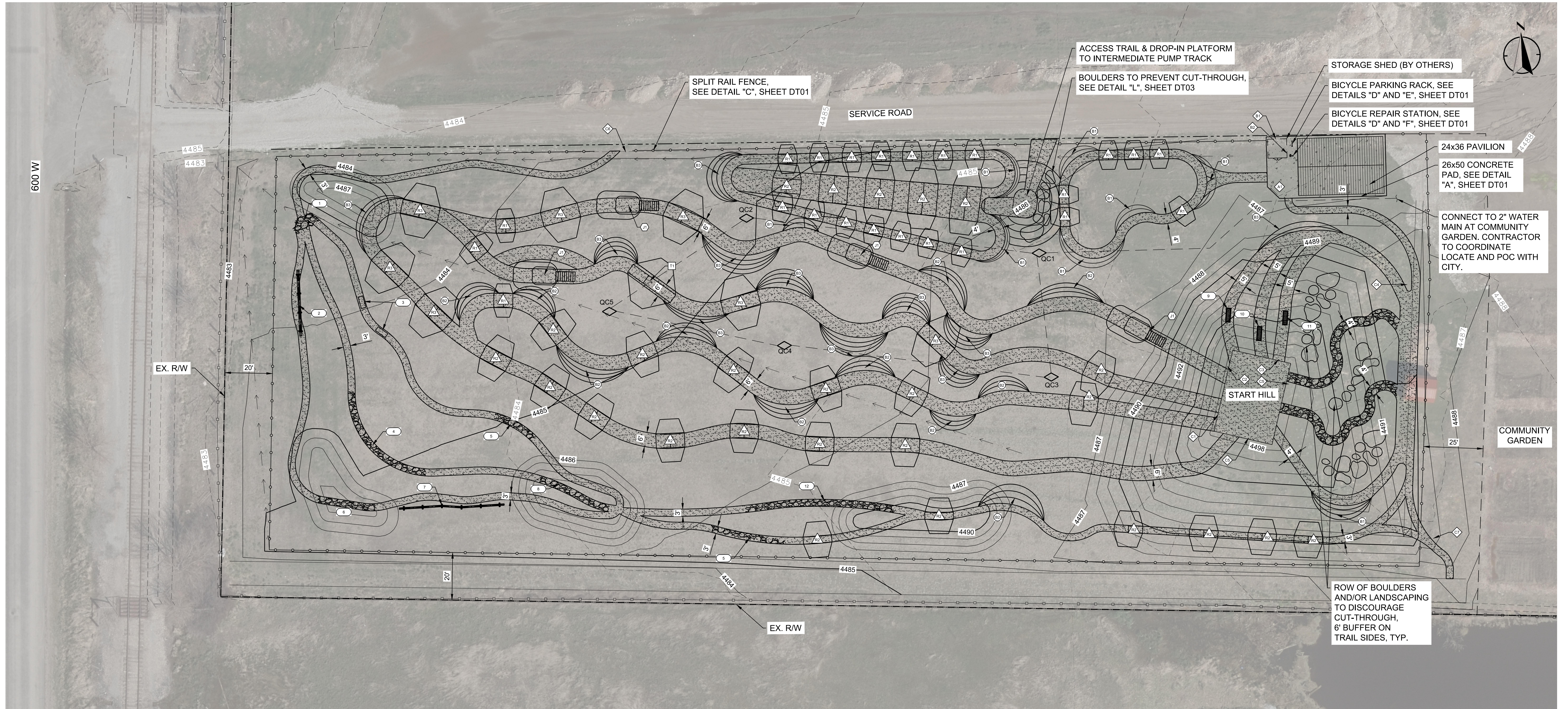
DESIGNED: _____	CRW	REVISIONS
REVIEWED: _____	TJN	NO DATE ITEM
DRAWN: _____	CRW	
2017-384	11/5/18	
PROJECT NO.	DATE	
-		
SCALE	2017-384 General Notes	
	FILE	



Bridger Bike Park
Logan, UT

ABBREVIATIONS & LEGEND

SHEET NO.
GN01
02 OF **08**



SITE PLAN LEGEND

TRAILS & SURFACES

- TRAIL SURFACING MATERIAL - SECTION "B", SHEET DT01
- CONCRETE PAD - SECTION "A", SHEET DT01
- ROCK ARMORED TRAIL - DETAIL "N", SHEET DT03

SITE FEATURES

- BOULDERS - DETAIL "L", SHEET DT03
- SPLIT RAIL FENCE - DETAIL "C", SHEET DT01

MAPS & SIGNAGE (FURNISHED BY OTHERS)

- PARK MAP
- DONOR RECOGNITION SIGN
- RULES & REGULATIONS SIGN
- S/M TRAIL SIGN
- L/L TRAIL SIGN
- M/S TRAIL SIGN
- DOWNHILL ONLY SIGN
- UPHILL ONLY SIGN
- DO NOT ENTER SIGN
- WAYFINDING SIGN

TRAIL FEATURES

- 24" ROLLER - SEE DETAIL "G", SHEET DT02
- 36" ROLLER - SEE DETAIL "G", SHEET DT02
- 48" ROLLER - SEE DETAIL "G", SHEET DT02
- 24" BERM - SEE DETAIL "K", SHEET DT02
- 36" BERM - SEE DETAIL "K", SHEET DT02
- 48" BERM - SEE DETAIL "K", SHEET DT02
- 48" TABLE-TOP JUMP - SEE DETAIL "H", SHEET DT02
- 36" WOODEN KICKER RAMP - SEE DETAILS "I" AND "J", SHEET DT02

- 1 LARGE ROCK GARDEN/PILE OF ROCKS - SEE DETAIL "N", SHEET DT03
- 2 SKINNY STRAIGHT LADDER - SEE DETAIL "P", SHEET DT03
- 3 ROCK LEDGE STACK/PODIUM STEP-UPS - SEE DETAIL "M", SHEET DT03
- 4 LINEAR ROCK GARDEN WITH CHOKES, LEDGES UP AND DOWN - SEE DETAILS "M" AND "N", SHEET DT03
- 5 ROCK GARDEN LEADING TO 18" ROCK DROP/LEDGE - SEE DETAILS "N" AND "O", SHEET DT03
- 6 LARGE ROCK GARDEN/PILE OF ROCKS - SEE DETAIL "N", SHEET DT03
- 7 SKINNY ZIGZAG OFFSET - SEE DETAIL "Q", SHEET DT03
- 8 NARROW ROCK GARDEN ENTRANCE FILTER FOR MOST DIFFICULT TRAILS. LEDGY & TIGHT, MIX OF FLAGSTONE AND BOULDER CHOKES. - SEE DETAIL "N", SHEET DT03

- 9 FLAT SECTION DROP, 36" HIGH/24" WIDE - SEE DETAIL "O", SHEET DT03
- 10 FLAT SECTION DROP, 24" HIGH/24" WIDE - SEE DETAIL "O", SHEET DT03
- 11 FLAT SECTION DROP, 12" HIGH/24" WIDE - SEE DETAIL "O", SHEET DT03
- 12 ROCK GARDEN ENTRANCE AND DRAINAGE, MIX OF FLAGSTONE AND RIVER ROCK - SEE DETAIL "N", SHEET DT03

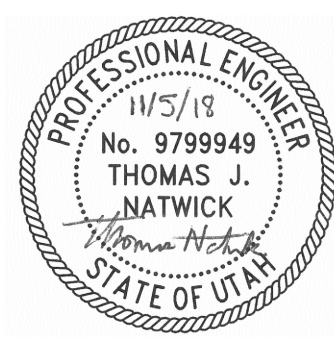
IRRIGATION SYSTEM

- QUICK COUPLER IRRIGATION VALVE
- MAINLINE: SCHEDULE 40 PVC PLASTIC PIPE WITH SCHEDULE 40 PVC SOLVENT WELD FITTINGS. 30" COVER. SUBJECT TO APPROVAL.

NOTES

1. TRAIL FEATURES ARE DIAGRAMMATIC AND INTENDED TO BE FLEXIBLE FOR ON-SITE BUILDING CONDITIONS.
2. CONTRACTOR RESPONSIBLE FOR INSTALLATION OF ALL SIGNS AND CITY TO FURNISH SIGNS.
3. CONTRACTOR TO BE RESPONSIBLE FOR PROVIDING QUICK COUPLER IRRIGATION SYSTEM CAPABLE OF DELIVERING WATER TO FLOW TRAILS AND PUMP TRACKS.

DESIGNED:	CRW	REVISIONS	
REVIEWED:	TN	NO	DATE
DRAWN:	CRW		ITEM
2017-384			
PROJECT NO.	11/5/18		
	DATE		
1" = 20'	2017-384		
SCALE	LAYOUT		
	FILE		



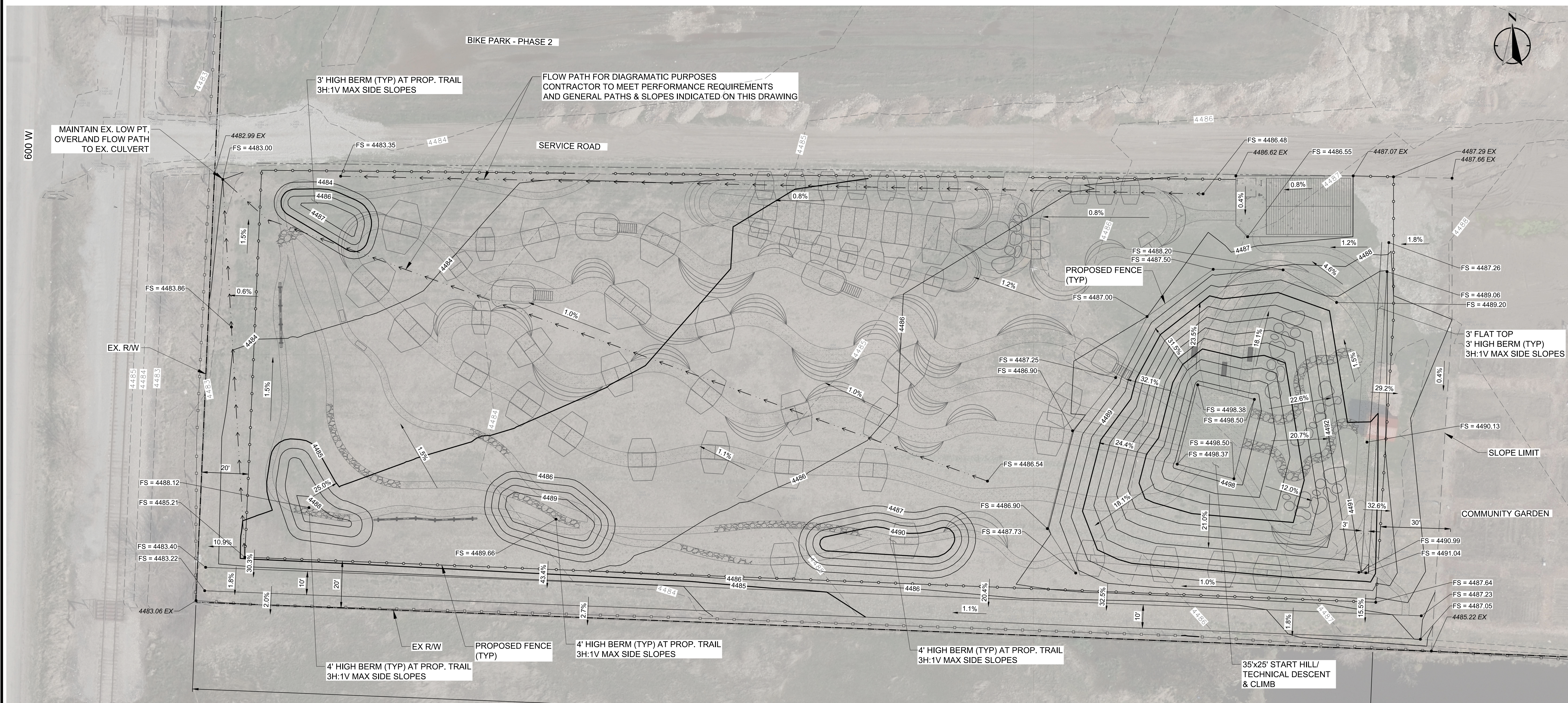
Bridger Bike Park

Logan, UT

SITE PLAN
TRAIL FEATURES

SHEET NO.

C01
03 OF 08



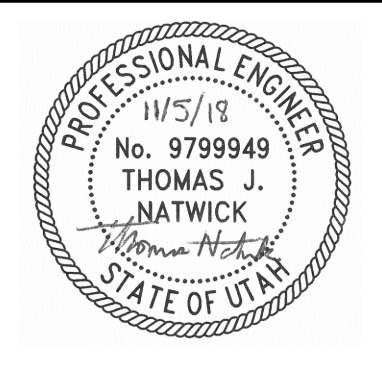
LEGEND:

- FS = X.XX FINISHED SURFACE ELEVATION
- X.XX EX EXISTING ELEVATION (MATCH EXISTING ELEVATION)
- X.XX% PROPOSED SLOPE
- (X.XX%) EXISTING SLOPE

NOTES:

1. FOR NOTES AND ABBREVIATIONS SEE SHEETS GN01.
2. GRADING ON PLANS IS FOR DIAGRAMMATIC PURPOSES ONLY AND WILL BE ADJUSTED AS NEEDED BY GENERAL CONTRACTOR AND TRAIL CONTRACTOR AS WELL AS THE DEPARTMENT PROJECT MANAGER AS NEEDED TO COME TO DESIRED TRAIL SOLUTION. GRADES MAY BE FIELD ADJUSTED TO BETTER ACCOMMODATE FEATURES AND MOWABLE SLOPES (MAXIMUM 3:1 SLOPES ALONG PERIMETER BERMS).
3. SEE SHEET C01 FOR BIKE PARK FEATURES AND OTHER GRADED FEATURES.
4. GRADING FOR FEATURES WILL BE DONE ON-SITE WITH DESIGN TEAM APPROVAL.
5. ALL SURFACES SHALL BE GRADED FOR POSITIVE DRAINAGE. PROVIDE 2% CROSS PITCH ON ALL WALKS UNLESS OTHERWISE SHOWN ON THE PLANS. WHERE DIRECTION IS NOT SHOWN, PROVIDE CROSS SLOPES TO ACHIEVE POSITIVE DRAINAGE.
6. CONTRACTOR TO REMOVE AND DISPOSE OF ALL TURF AND DEBRIS OFF-SITE FOLLOWING APPLICABLE CODES AND ORDINANCES.
7. PROMPTLY NOTIFY PROJECT ENGINEER IF UNSATISFACTORY SUB-GRADE MATERIALS OR GROUNDWATER ISSUES ARE DISCOVERED. NO PAYMENT WILL BE MADE FOR ADDITIONAL WORK COMPLETED WITHOUT PRIOR AUTHORIZATION BY OWNERS REPRESENTATIVE.
8. PROVIDE INDICATOR FABRIC 12" BELOW FINISHED GRADE OF ALL SOIL SURFACED TRAILS. SEE SPECIFICATIONS FOR INDICATOR FABRIC PRODUCT INFORMATION.
9. CONTRACTOR TO PROVIDE AND MAINTAIN ALL NECESSARY EROSION CONTROL MEASURES PRIOR TO AND THROUGHOUT CONSTRUCTION. EROSION CONTROL PROTECTION SHALL REMAIN IN PLACE UNTIL CONSTRUCTION IS COMPLETE.
10. THE EXTENT OF EROSION CONTROL PROTECTION SHALL BE OBSERVED BY THE CITY ENGINEER AND ADJUSTED AS NEEDED DURING CONSTRUCTION BASED ON SITE CONDITIONS AND THE PERFORMANCE OF THE EROSION CONTROL MEASURES. TO SUPPLY SUFFICIENT EROSION CONTROL AND MINIMIZE DOWNSTREAM WATERWAY POLLUTION.

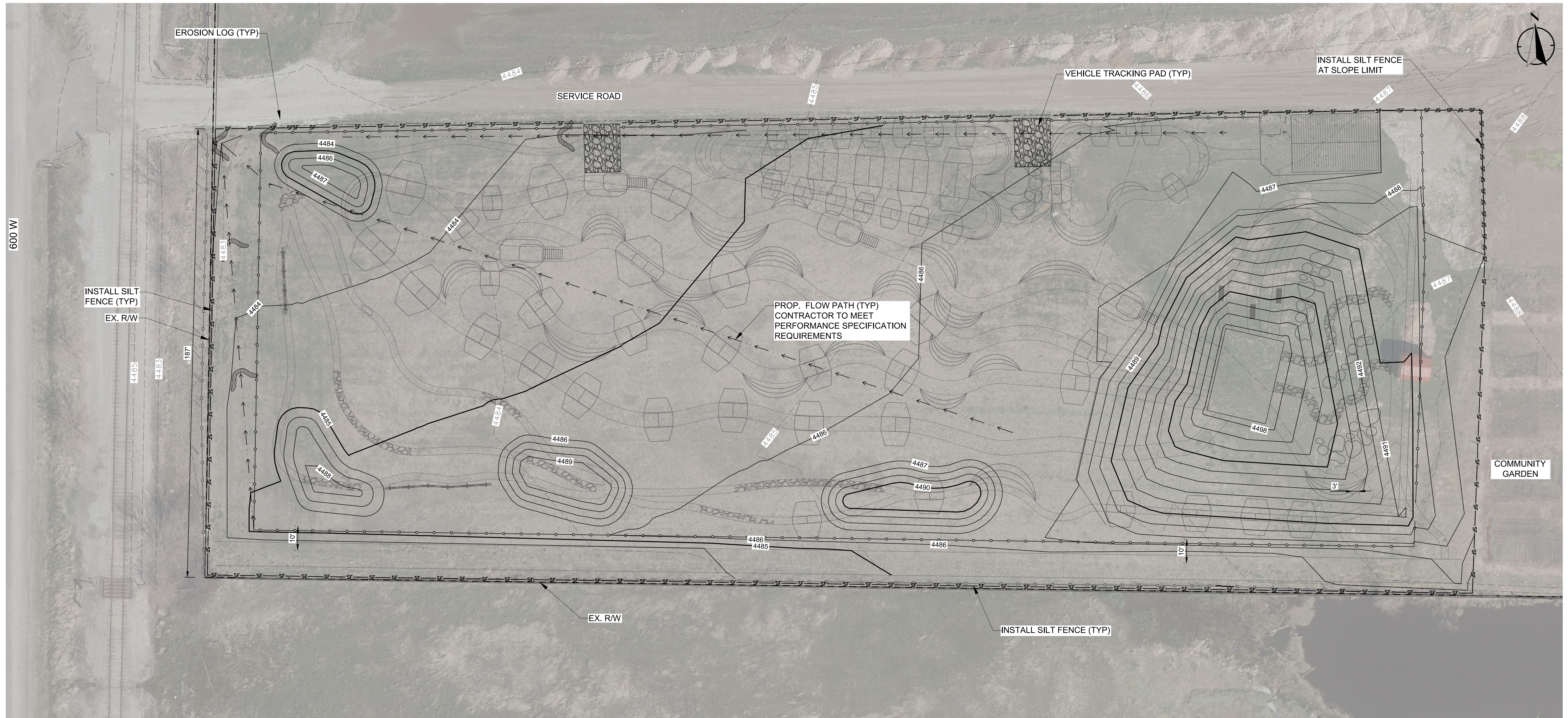
DESIGNED:	CRW	REVISIONS
REVIEWED:	TJN	NO DATE ITEM
DRAWN:	CRW	
2017-384	11/5/18	
PROJECT NO.	DATE	
1" = 20'	2017-384 Grading	
SCALE	FILE	



Bridger Bike Park
Logan, UT

GRADING & DRAINAGE PLAN

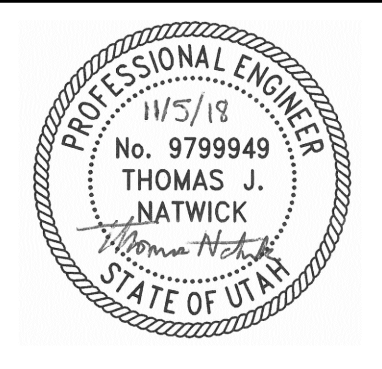
SHEET NO.
CG01
04 OF **08**



EROSION PREVENTION AND SEDIMENT CONTROL LEGEND	
SYMBOL	ITEM
—sf—sf—	SILT FENCE
∩	EROSION LOG
	VEHICLE TRACKING PAD (CONST. ENTRANCE)

- NOTES:**
- FOR NOTES AND ABBREVIATIONS SEE SHEETS GN01.
 - CONTRACTOR TO PROVIDE AND MAINTAIN ALL NECESSARY EROSION CONTROL MEASURES PRIOR TO AND THROUGHOUT CONSTRUCTION. EROSION CONTROL PROTECTION SHALL REMAIN IN PLACE UNTIL CONSTRUCTION IS COMPLETE.
 - THE EXTENT OF EROSION CONTROL PROTECTION SHALL BE OBSERVED BY THE CITY ENGINEER AND ADJUSTED AS NEEDED DURING CONSTRUCTION BASED ON SITE CONDITIONS AND THE PERFORMANCE OF THE EROSION CONTROL MEASURES, TO SUPPLY SUFFICIENT EROSION CONTROL AND MINIMIZE DOWNSTREAM WATERWAY POLLUTION.
 - IF DEWATERING SERVICES ARE USED, ADJOINING PROPERTIES AND DISCHARGE LOCATIONS SHALL BE PROTECTED FROM EROSION. DISCHARGE SHALL BE ROUTED THROUGH AN EFFECTIVE SEDIMENT CONTROL MEASURE (I.E. SILT FENCE, OR OTHER APPROPRIATE MEASURE).

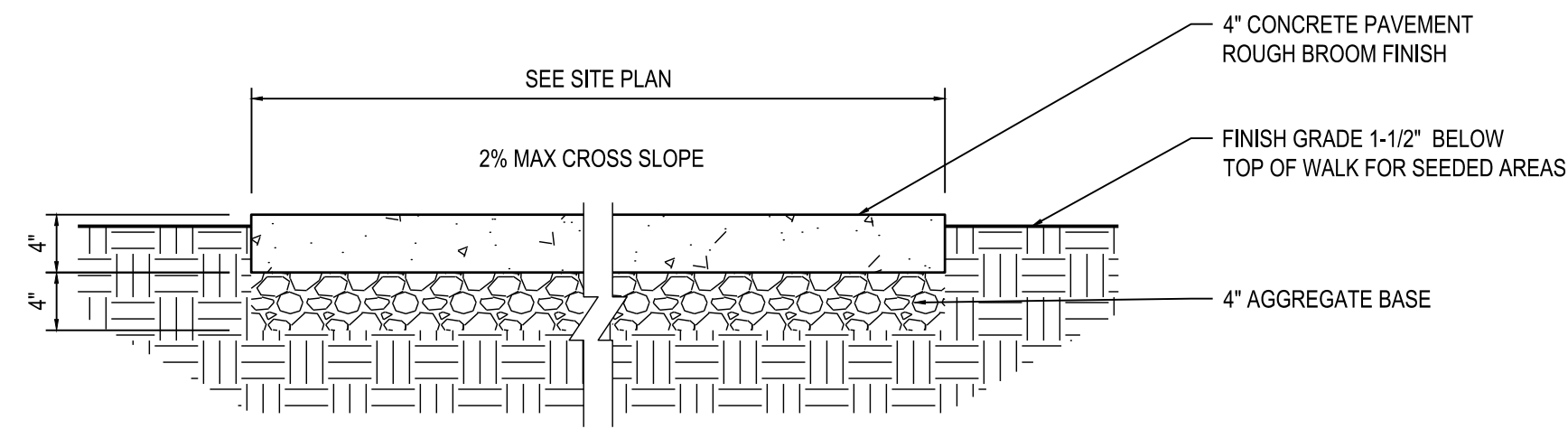
DESIGNED: _____	CRW	REVISIONS
REVIEWED: TJN		NO DATE ITEM
DRAWN: CRW		
2017-384	11/5/18	
PROJECT NO.	DATE	
1" = 20'	2017-384 Erosion Control	
SCALE	FILE	



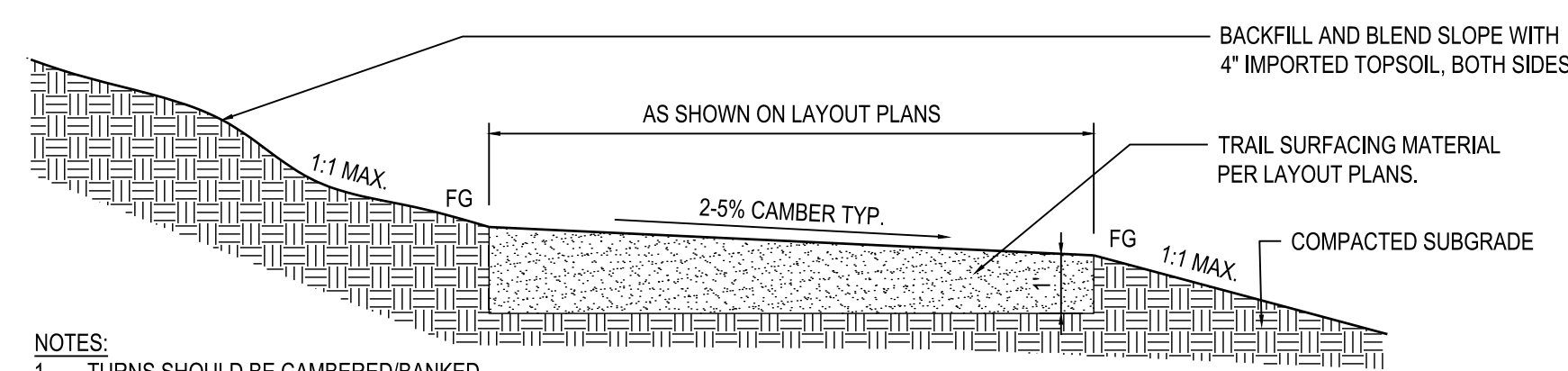
Bridger Bike Park
Logan, UT

EROSION CONTROL PLAN

SHEET NO.
EC01
05 OF **08**

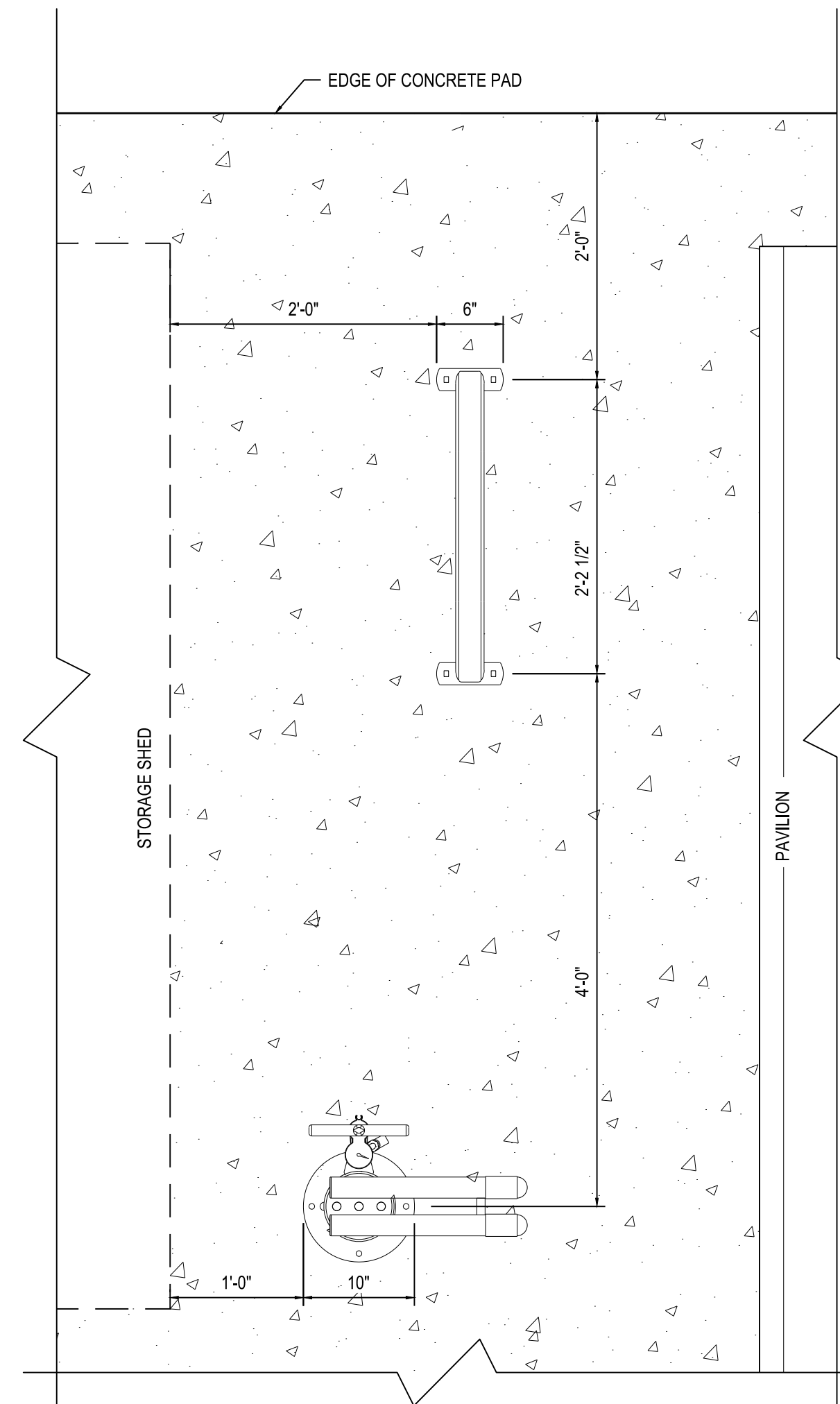


A CONCRETE PAD
SCALE: 1" = 1'-0"

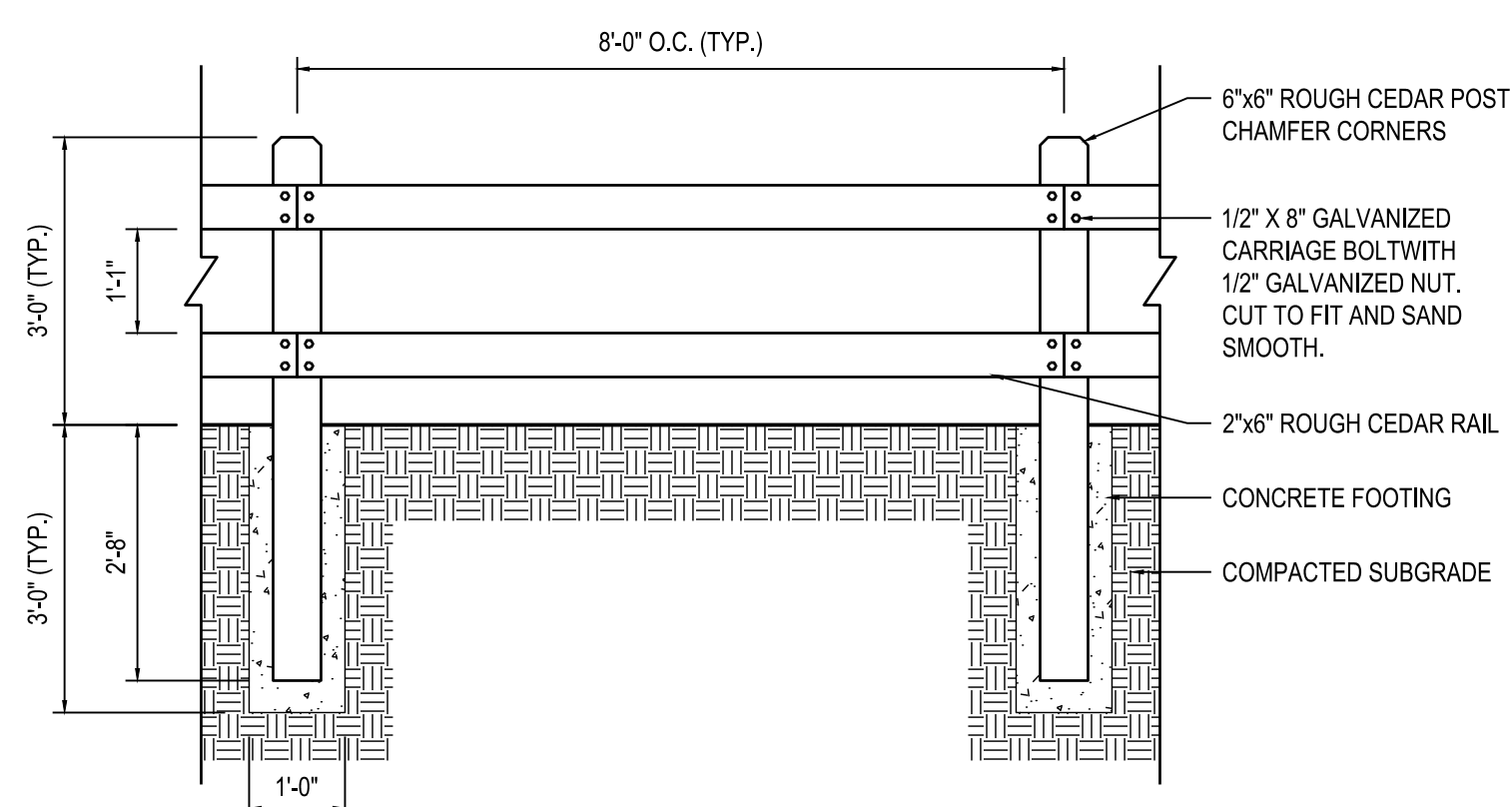
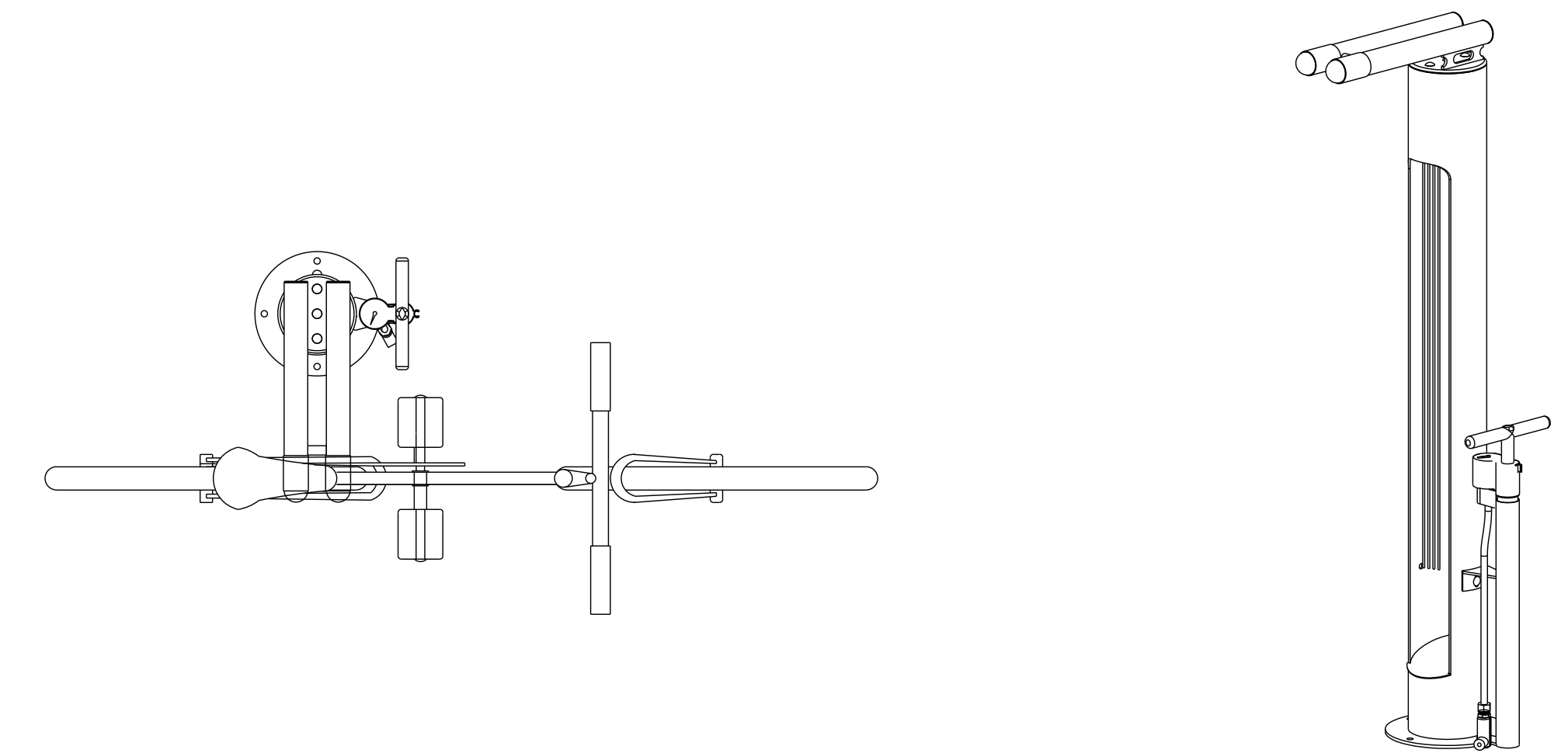


- NOTES:
1. TURNS SHOULD BE CAMBERED/BANKED.
 2. TRAILSIDE OBJECTS MAY BE PLACED AT THE APEX OF TURNS, AS NEEDED TO PREVENT OR REDUCE SHORT CUTTING.
 3. TO ENSURE DRAINAGE ON FLAT GROUND, THE TRAIL SHOULD BE CAMBERED NOT CROWNED. CAMBERING SHOULD BE SLOPED TOWARDS THE INSIDE TURN. LARGER CAMBERING MAY BE REQUIRED IN LARGER TURNS. CAMBERING IS NOT REQUIRED ON THE ASCENDING OR DESCENDING FACES.
 4. GRADE TO EXISTING GRADES TO AVOID RIDGES OR DROPS.

B MTN BIKE TRAIL SECTION
SCALE: 1/2" = 1'-0"

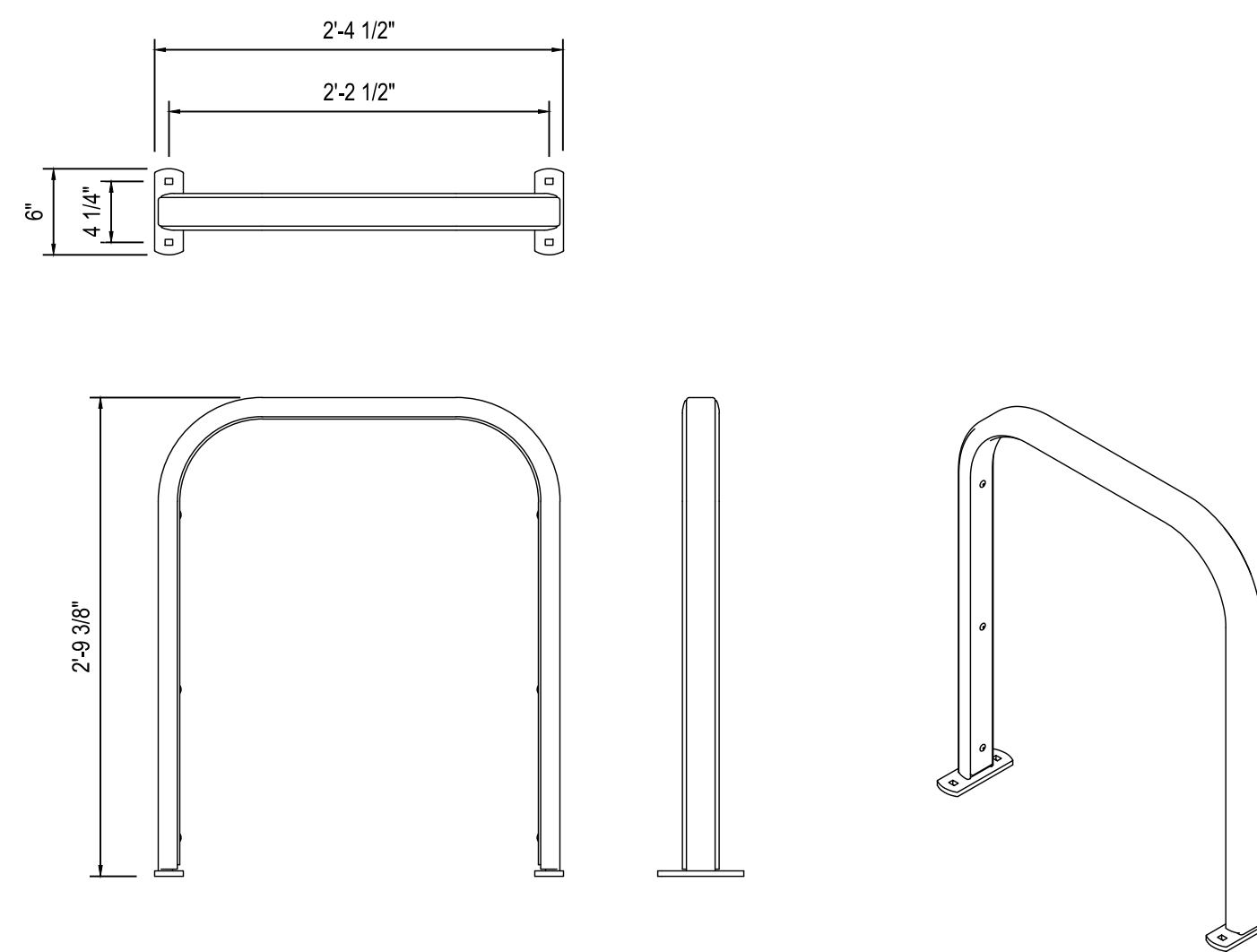


D BICYCLE PARKING & REPAIR STATION PLAN
SCALE: 1" = 1'-0"



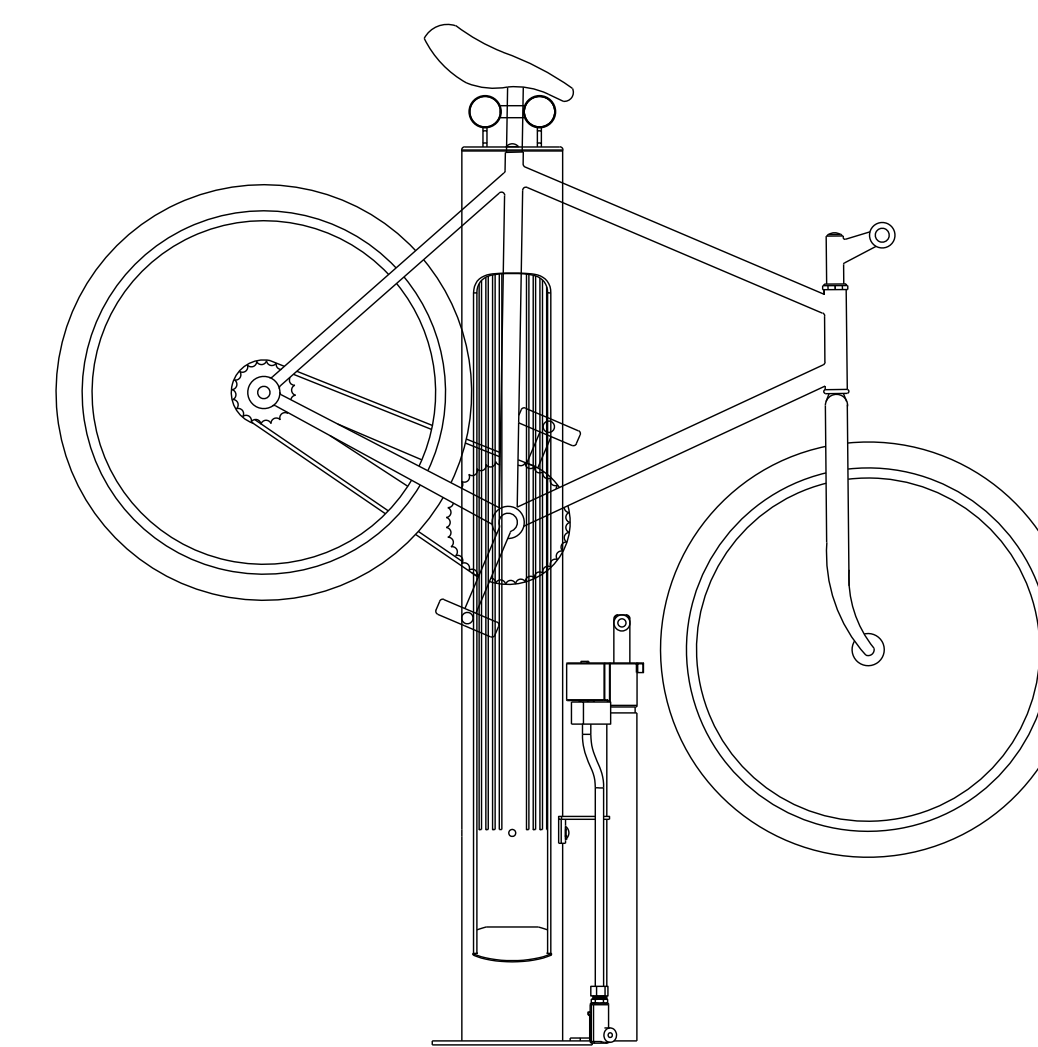
- NOTES:
1. DISTANCE FROM FENCE POSTS TO EDGE OF CONCRETE PLAZA OR TRAIL IS 2'-6\"/>

C SPLIT RAIL FENCE
SCALE: 1/2" = 1'-0"



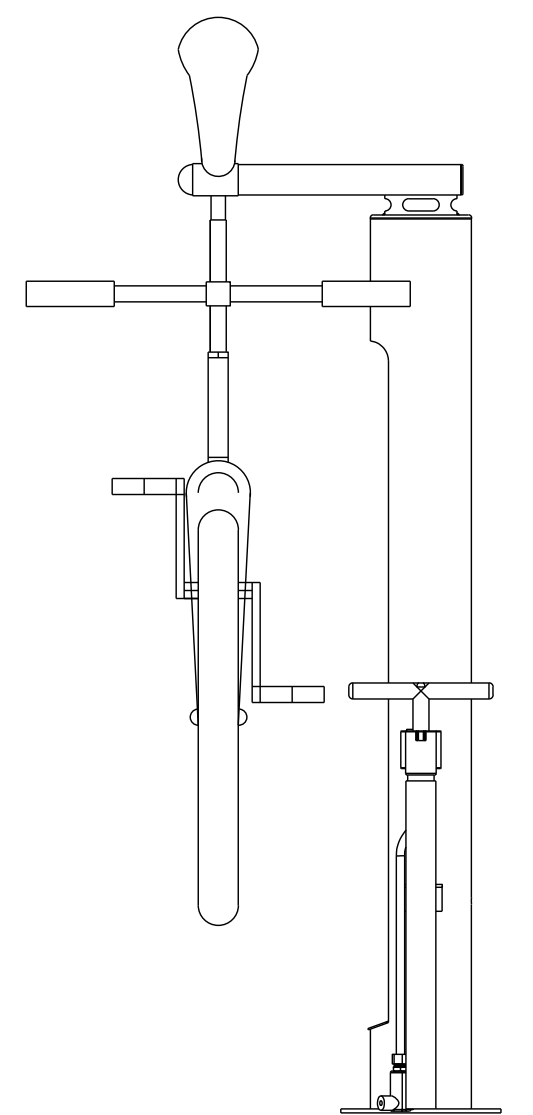
- NOTES:
1. MANUFACTURER: SPORTWORKS NORTHWEST INC. OR APPROVED EQUAL.

E BICYCLE PARKING RACK
SCALE: 1" = 1'-0"

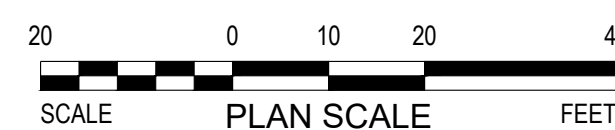
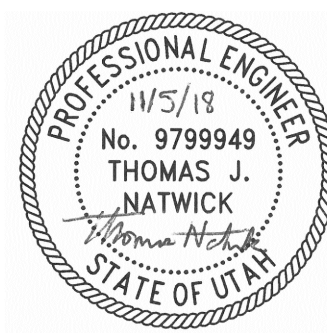


- NOTES:
1. MANUFACTURER: DERO BIKE RACKS OR APPROVED EQUAL.

F BICYCLE REPAIR STATION
SCALE: 1" = 1'-0"



DESIGNED:	CRW	REVISIONS	
REVIEWED:	TJN	NO	DATE
DRAWN:	JJH	DATE	ITEM
2017-384	11/5/18		
PROJECT NO.	DATE		
1" = 20'	2017-384 Details		
SCALE	FILE		

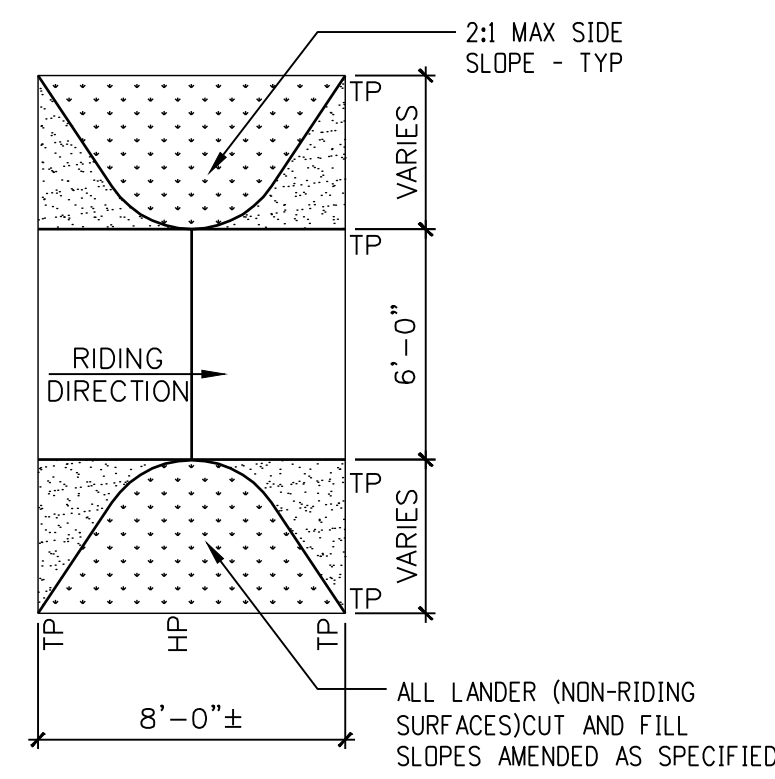


Bridger Bike Park
Logan, UT

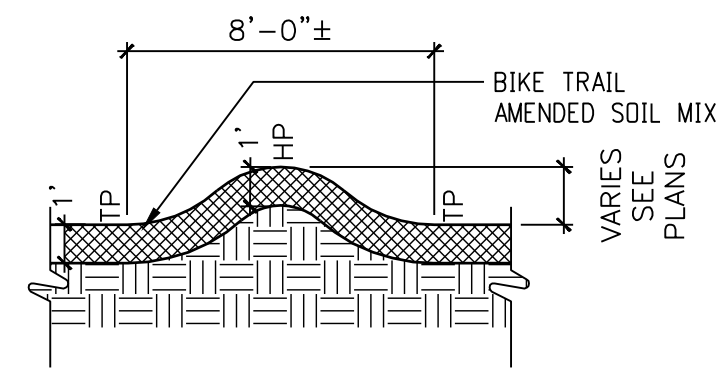
SITE DETAILS

SHEET NO.

DT01
06 OF **08**



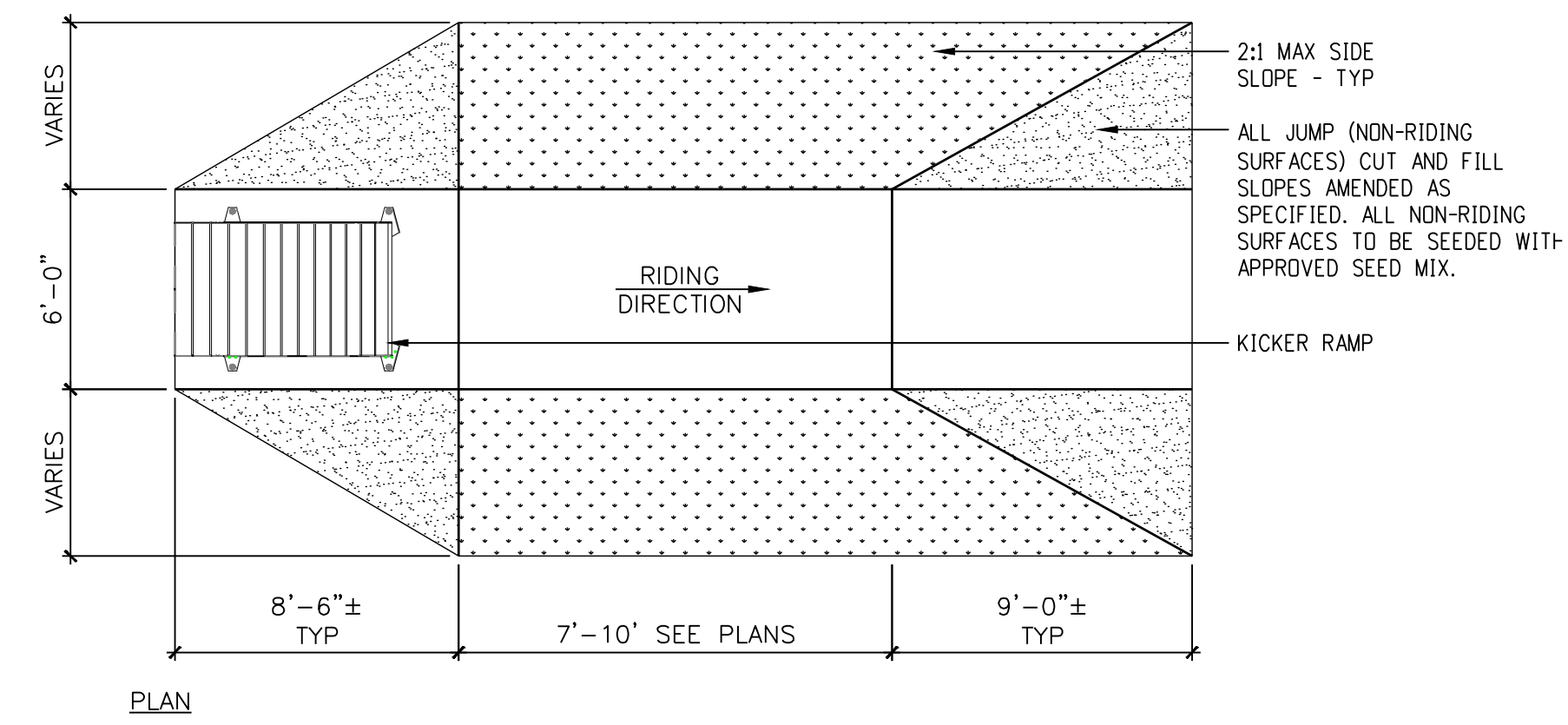
PLAN



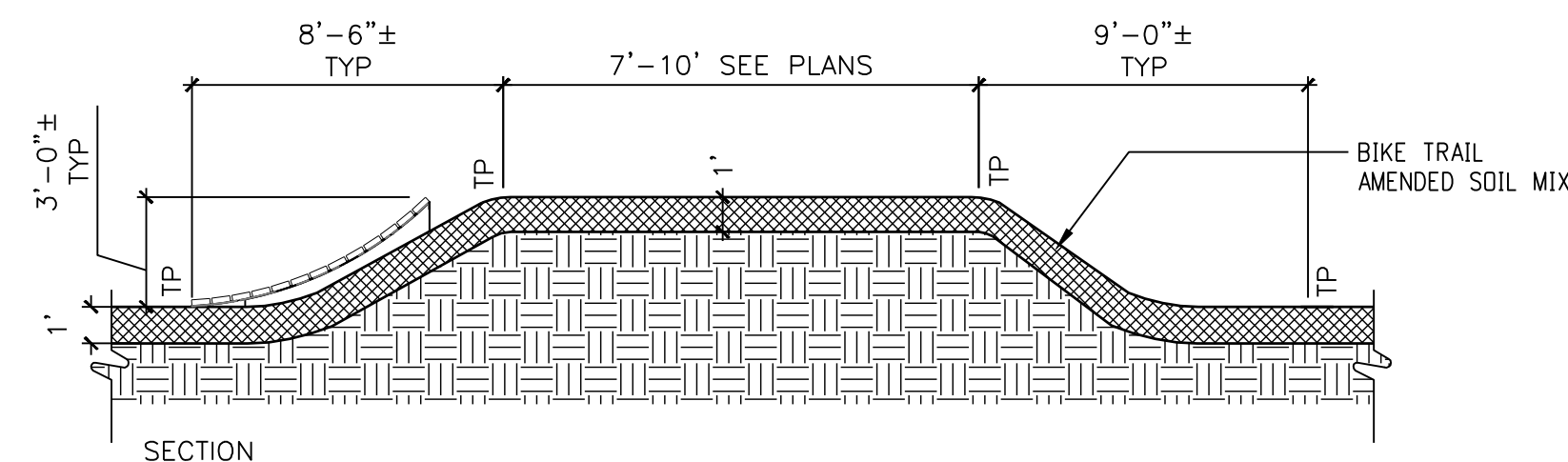
SECTION

NOTES:
1. ALL DIMENSIONS ARE APPROXIMATE. TRAIL TECHNICAL FEATURES SHALL MEET ALL PERFORMANCE SPECIFICATIONS AS REQUIRED.

G ROLLER
SCALE: N.T.S.



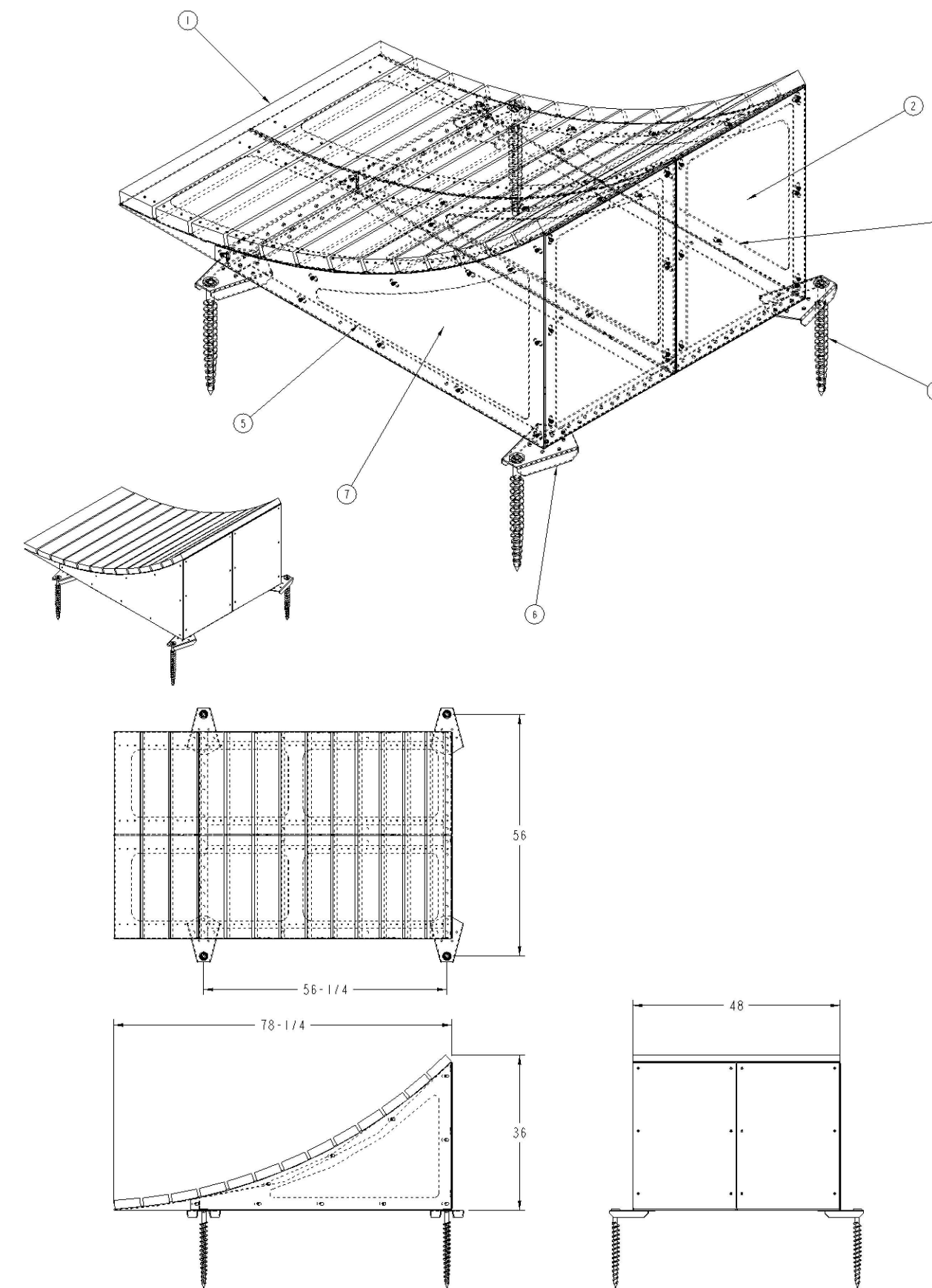
PLAN



SECTION

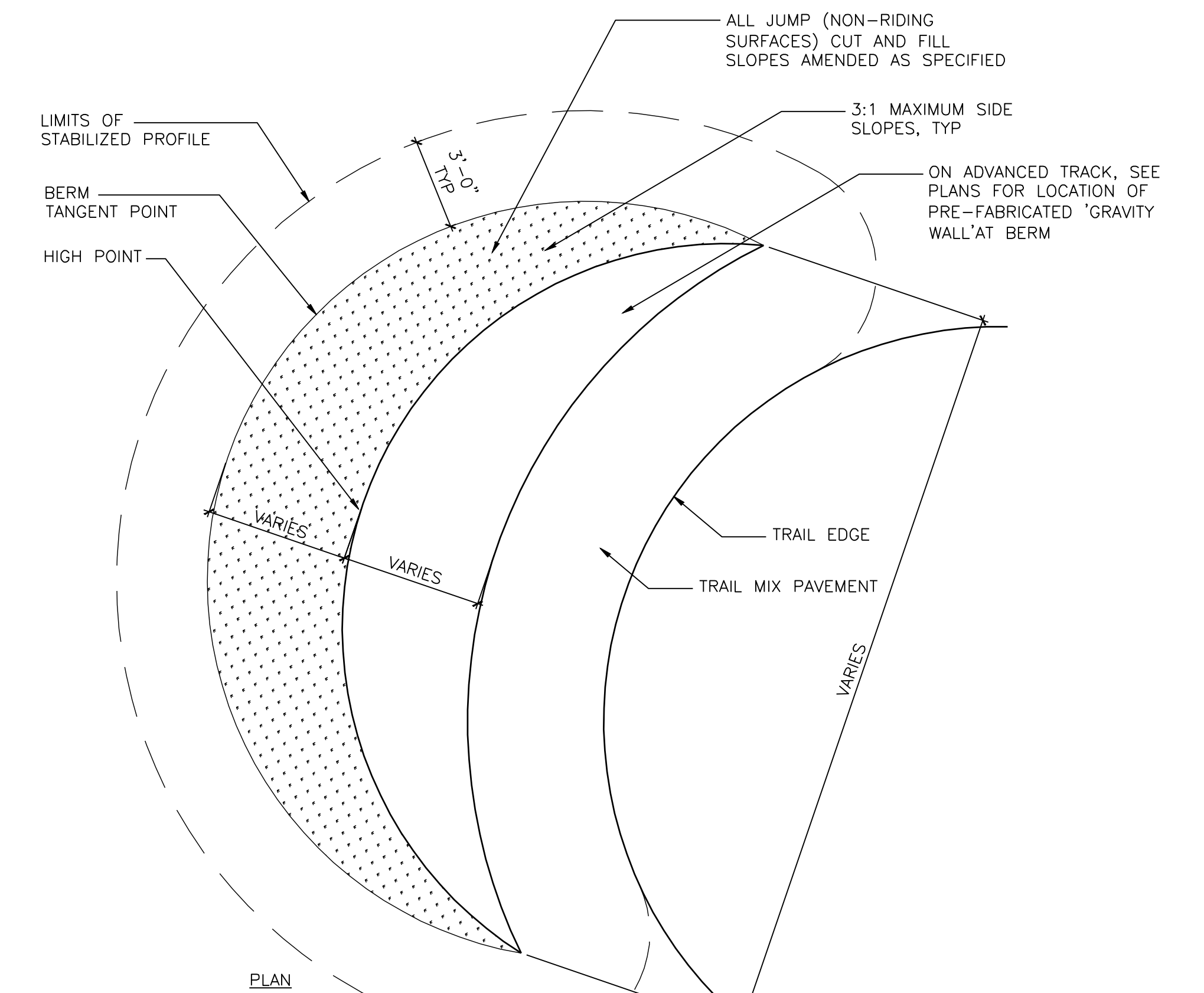
NOTES:
1. ALL DIMENSIONS ARE APPROXIMATE. TRAIL TECHNICAL FEATURES SHALL MEET ALL PERFORMANCE SPECIFICATIONS AS REQUIRED.

I KICKER LANDER
SCALE: N.T.S.

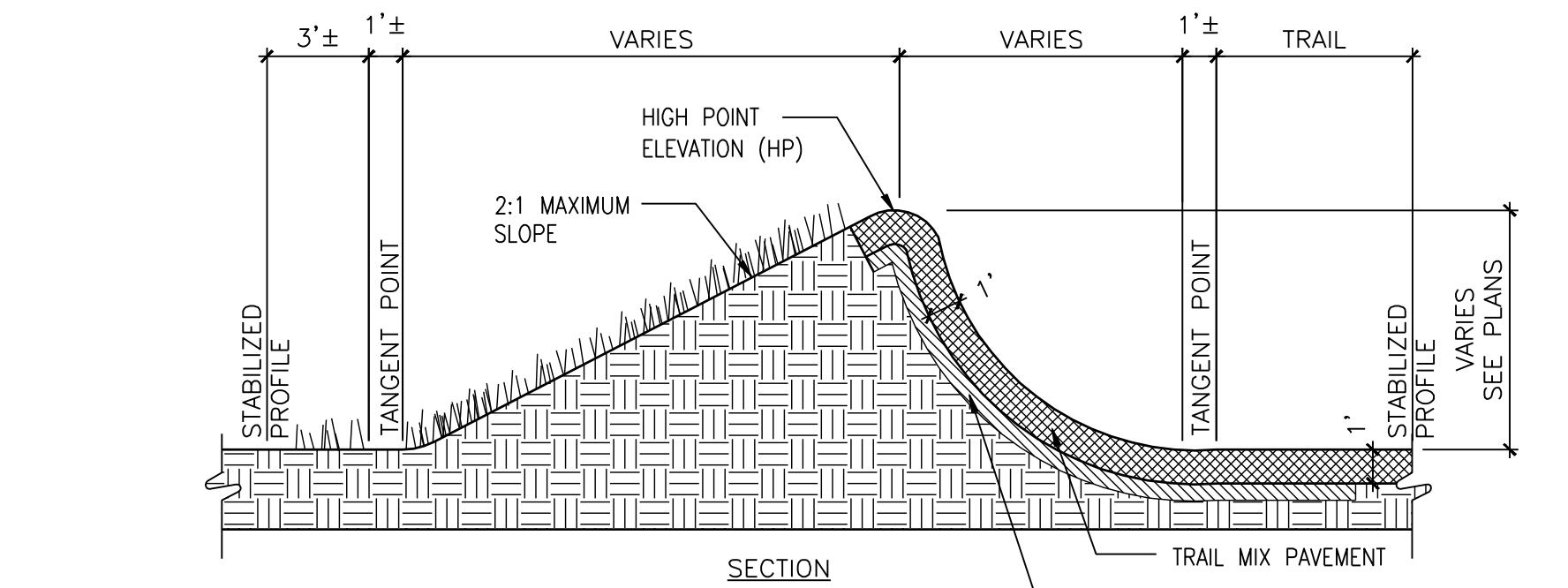


NOTES:
1. 48" WOOD BOARD, 2X6 SQUARE CUT
2. BACK ENCLOSURE, 3' HIGH KICKER, 24" WIDE
3. EARTH ANCHOR, 18" LONG
4. KICKER FRAME, 3' HIGH CENTER
5. KICKER FRAME, 3' HIGH, RIGHT
6. SCREW ANCHOR PLATE, SINGLE
7. SIDE ENCLOSURE, 3' HIGH KICKER
8. MANUFACTURER: PROGRESSIVE BIKE RAMPS OR APPROVED EQUAL

J KICKER RAMP
SCALE: N.T.S.



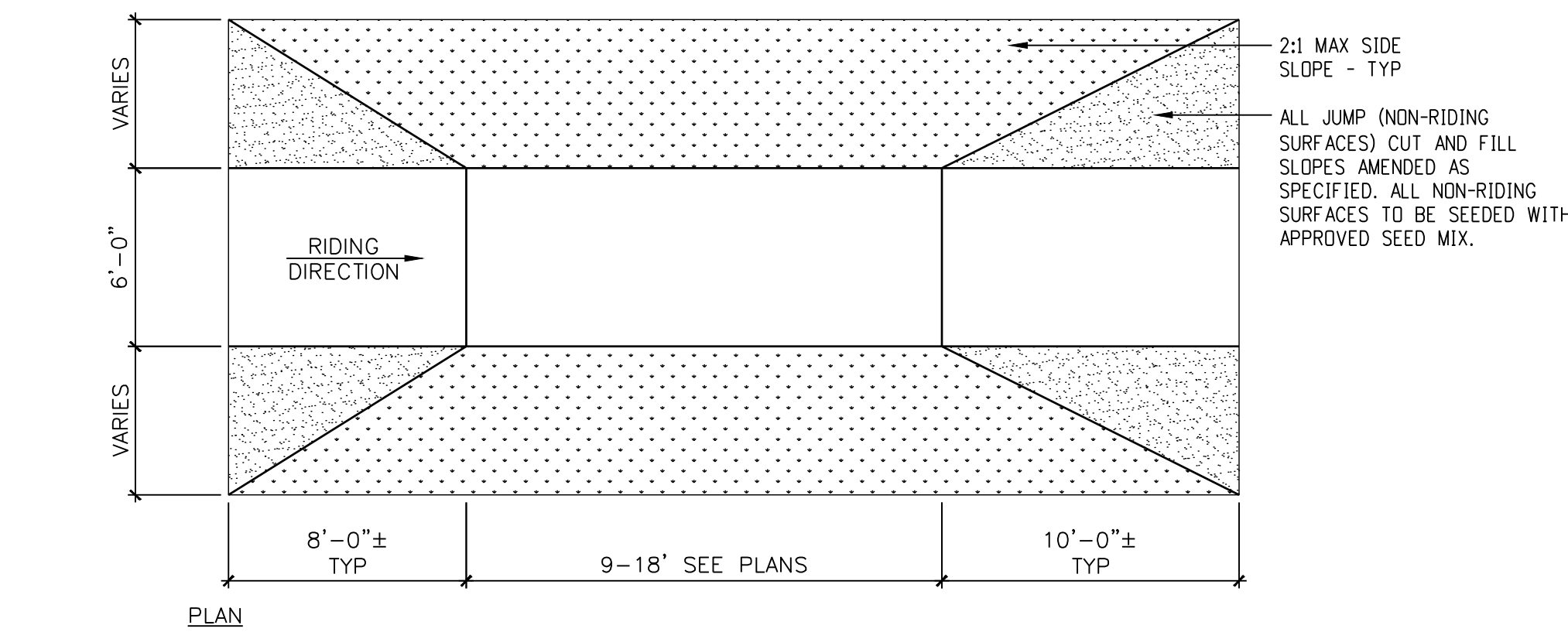
PLAN



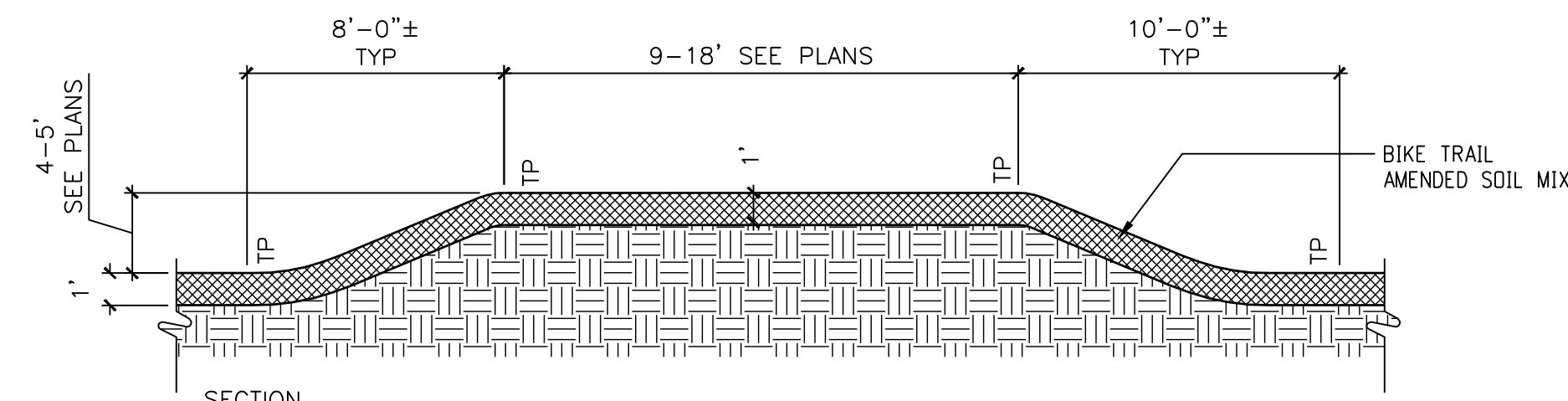
SECTION

NOTES:
1. ALL DIMENSIONS ARE APPROXIMATE. TRAIL TECHNICAL FEATURES SHALL MEET ALL PERFORMANCE SPECIFICATIONS AS REQUESTED.
2. THIS DETAIL APPLIES TO ALL BERMS CONTAINED IN THIS PROJECT.

K BERM
SCALE: N.T.S.



PLAN

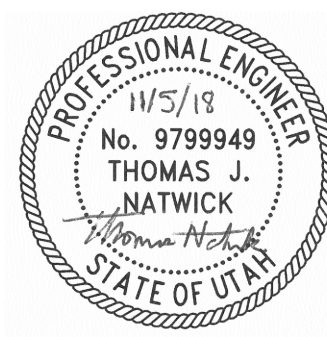


SECTION

NOTES:
1. ALL DIMENSIONS ARE APPROXIMATE. TRAIL TECHNICAL FEATURES SHALL MEET ALL PERFORMANCE SPECIFICATIONS AS REQUIRED.

H TABLE TOP
SCALE: N.T.S.

DESIGNED:	CRW	REVISIONS
REVIEWED:	TJN	NO DATE ITEM
DRAWN:	JJH	
2017-384 PROJECT NO.	11/5/18 DATE	
1" = 20' SCALE	2017-384 Details2 FILE	



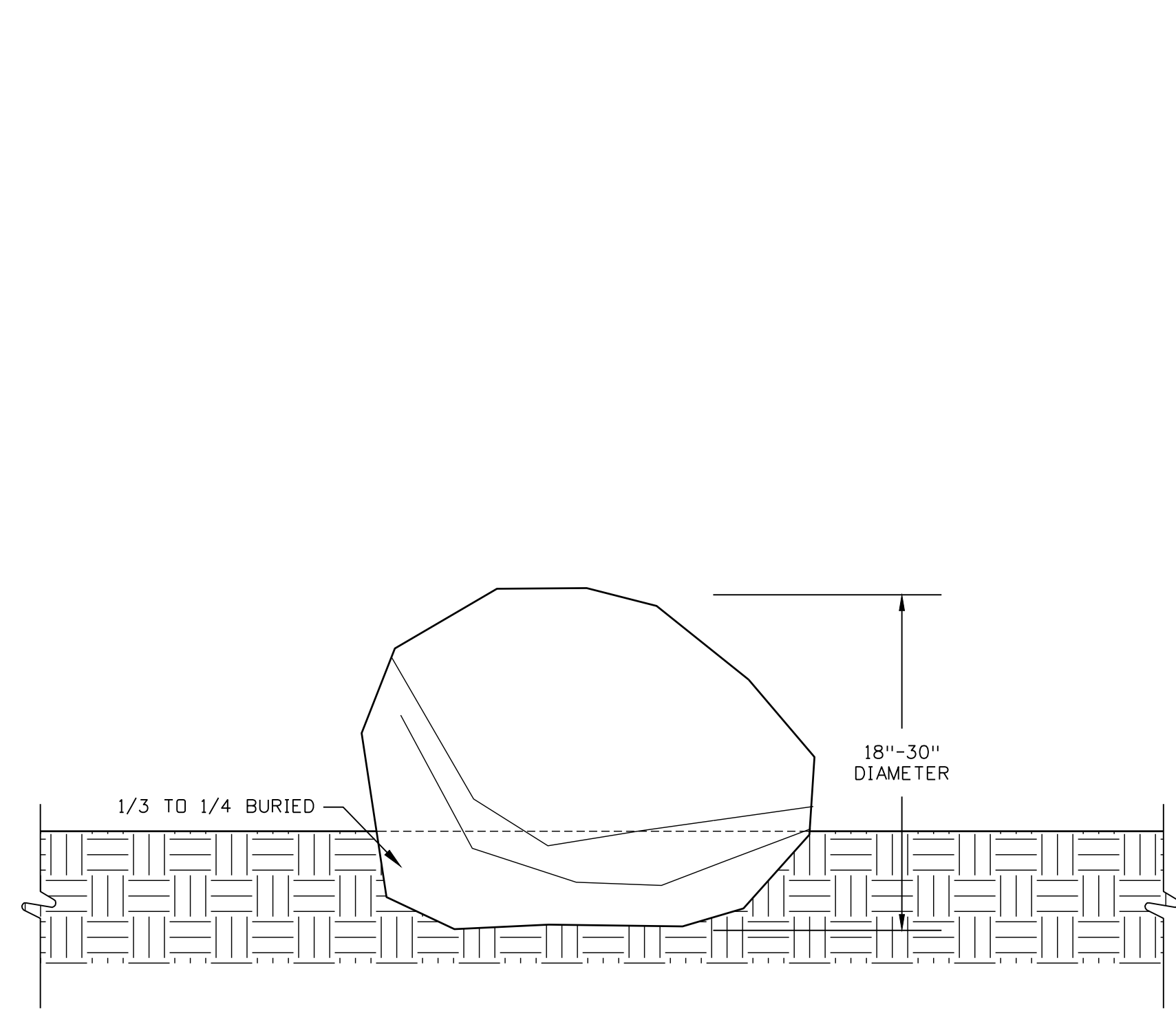
Bridger Bike Park

Logan, UT

SITE DETAILS

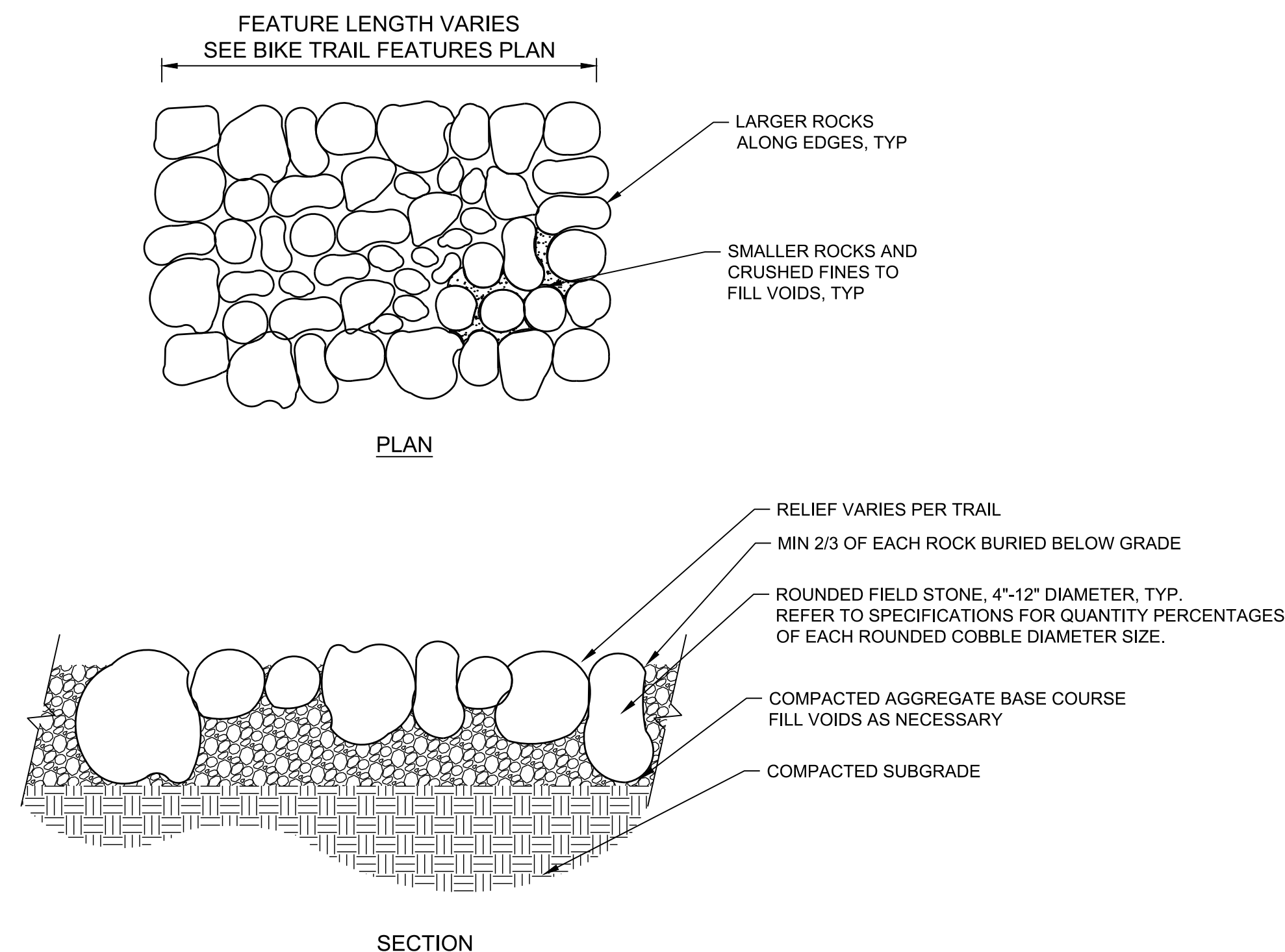
SHEET NO.

DT02
07 OF **08**



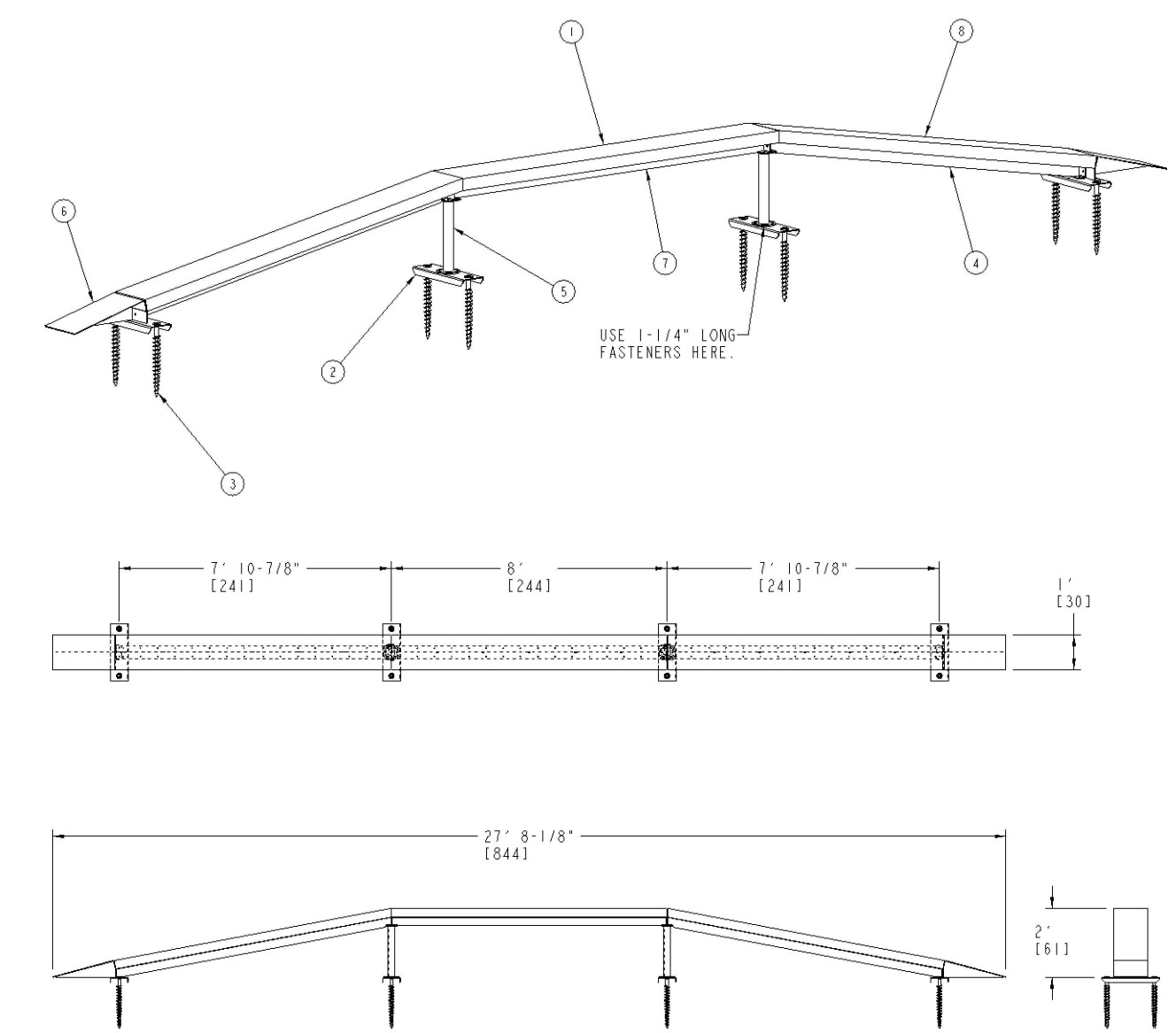
- NOTES:
1. FIELD STONE TO BE ROUNDED WITH SMOOTH AND ROUND SURFACE EXPOSED
 2. CONTRACTOR SHALL SUBMIT SAMPLE OF ROCK PRIOR TO CONSTRUCTION

L LANDSCAPE BOULDERS
SCALE: N.T.S.



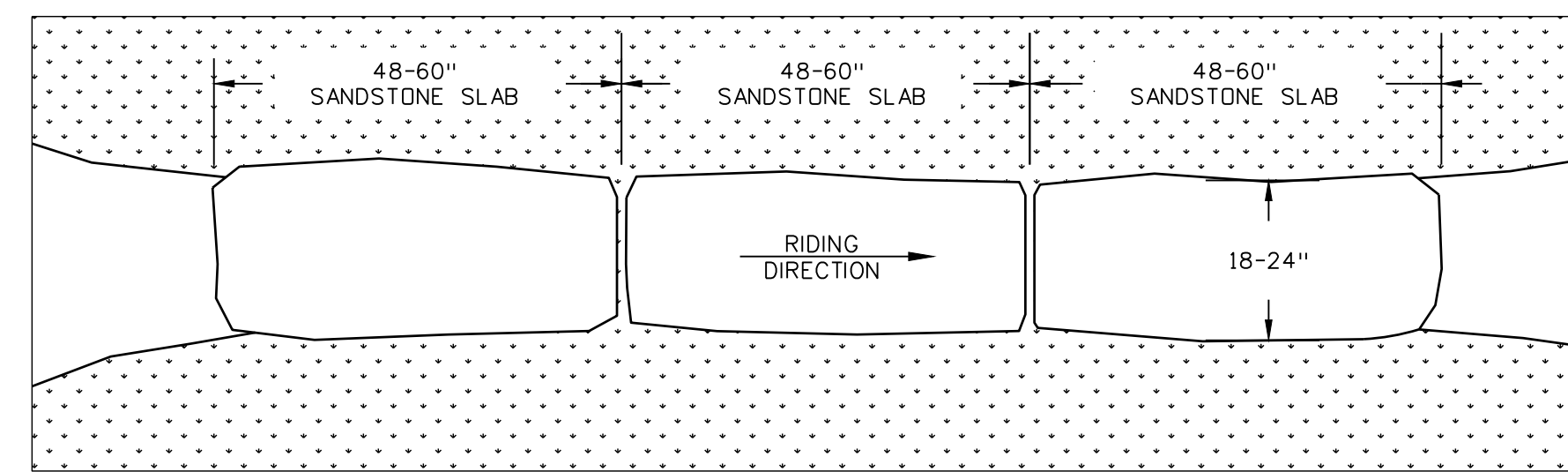
- NOTES:
1. FIELD STONE TO BE ROUNDED WITH SMOOTH AND ROUND SURFACE EXPOSED
 2. CONTRACTOR SHALL SUBMIT SAMPLE OF ROCK PRIOR TO CONSTRUCTION
 3. INTENT IS A BUMPY SURFACE WITHOUT SHARP EDGES TO ALLOW ALL TYPES OR RIDERS

N ROCK GARDEN
SCALE: N.T.S.

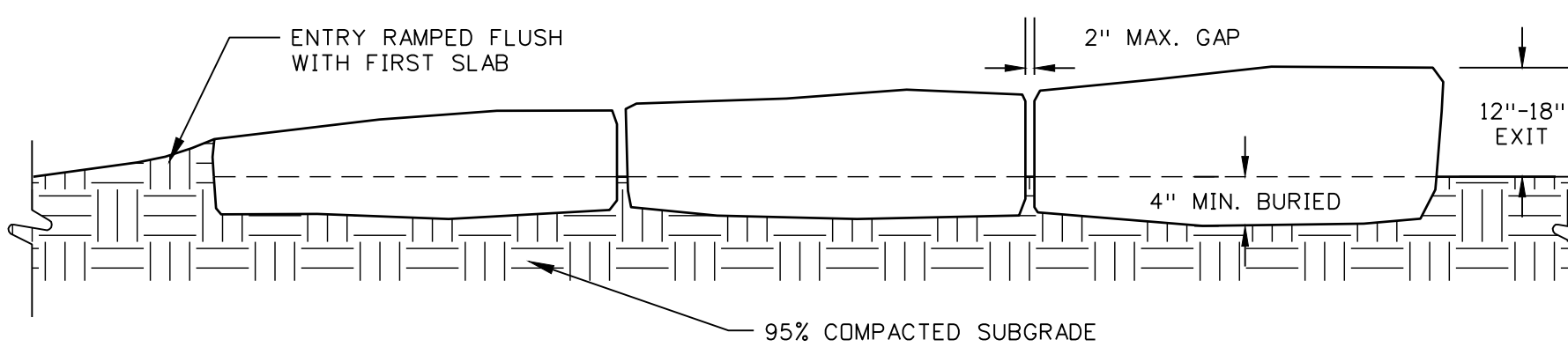


- NOTES:
1. 3 X 8 X 8' LONG LUMBER
 2. ANCHOR CHANNEL, SKINNY
 3. EARTH ANCHOR, 18" LONG
 4. SKINNY RAMP, 8' LONG, 2' HIGH
 5. SKINNY SUPPORT, 2' OBSTACLE HEIGHT
 6. SKINNY TOE PLATE ASSY, 12"
 7. SKINNY, STRAIGHT, 8'
 8. SPECIAL WOOD, SKINNY A-FRAME, 2' HIGH, 3 X 12
 9. MANUFACTURER: PROGRESSIVE BIKE RAMP OR APPROVED EQUAL

P SKINNY STRAIGHT LADDER
SCALE: N.T.S.



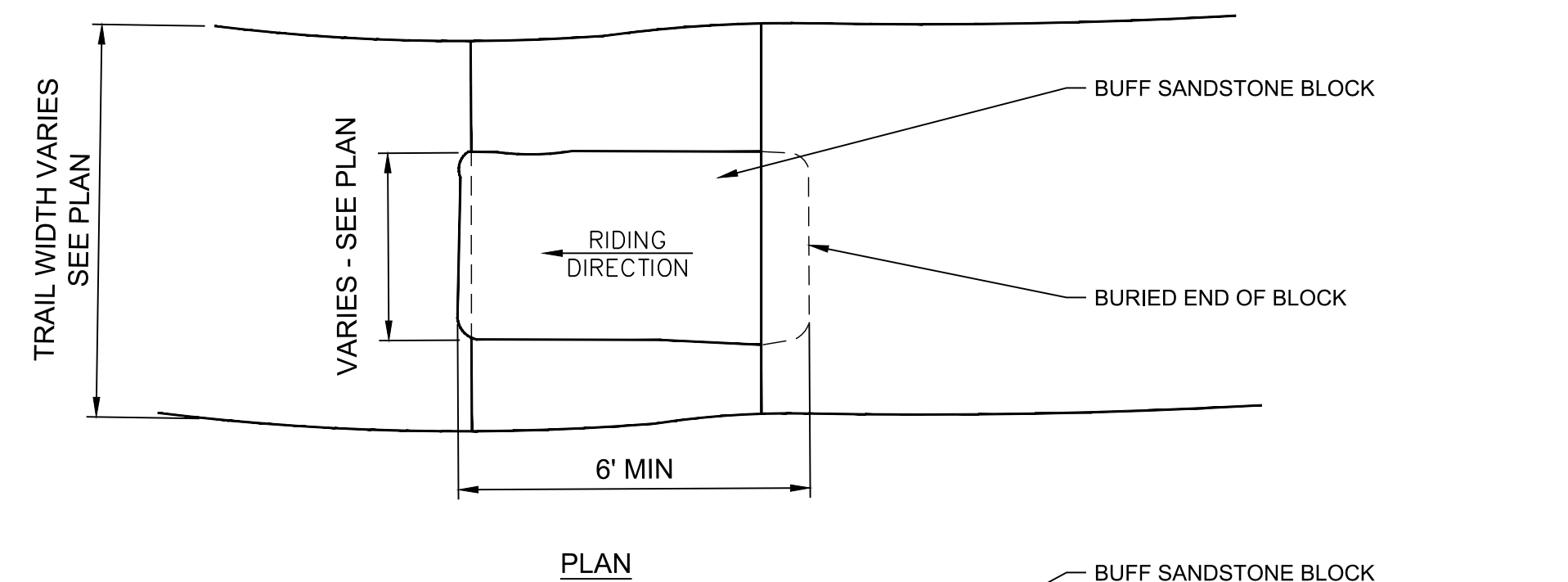
PLAN



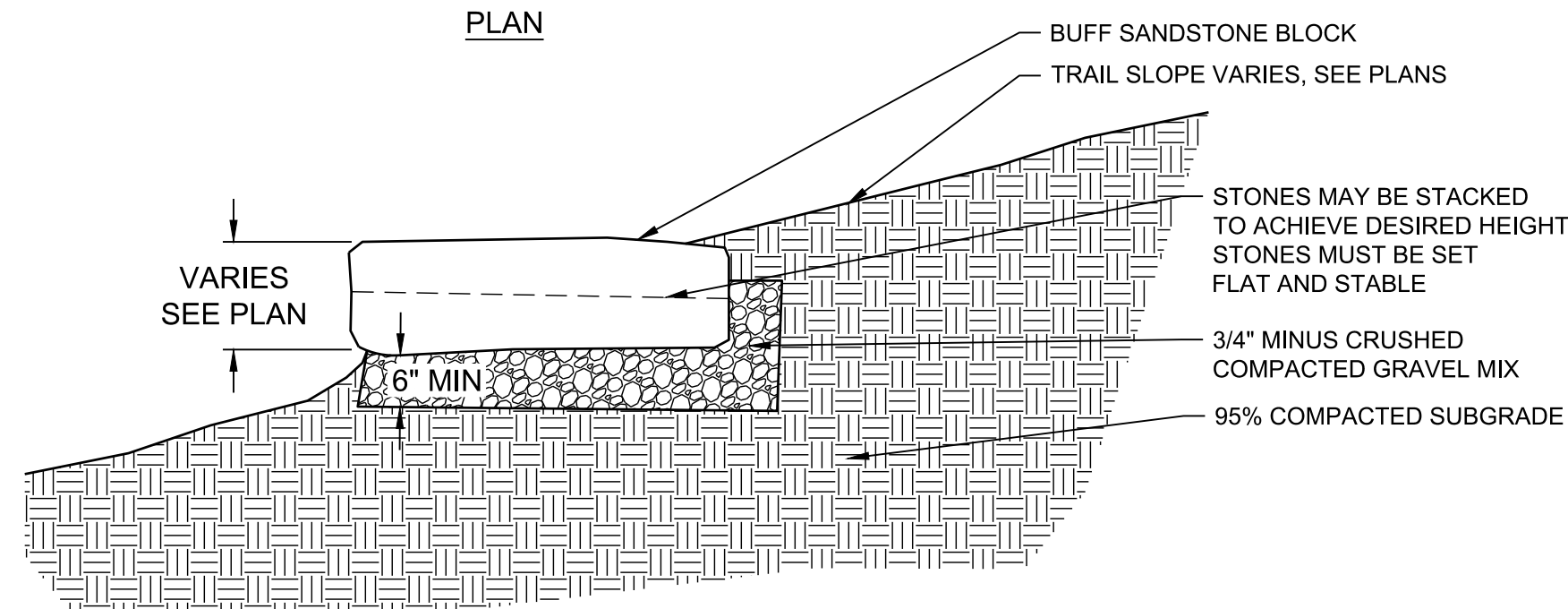
SECTION

- NOTES:
1. END STONES TO HAVE A SMOOTH TRANSITION FROM TRAIL TO ROCK CAUSEWAY
 2. STONE SIZES TO VARY TO ACCOMMODATE FEATURE LOCATION ON TRAIL
 3. ALL BOULDER PLACEMENT SHALL BE DONE UNDER SUPERVISION OF OWNER'S REPRESENTATIVE

M ROCK DROP
SCALE: N.T.S.



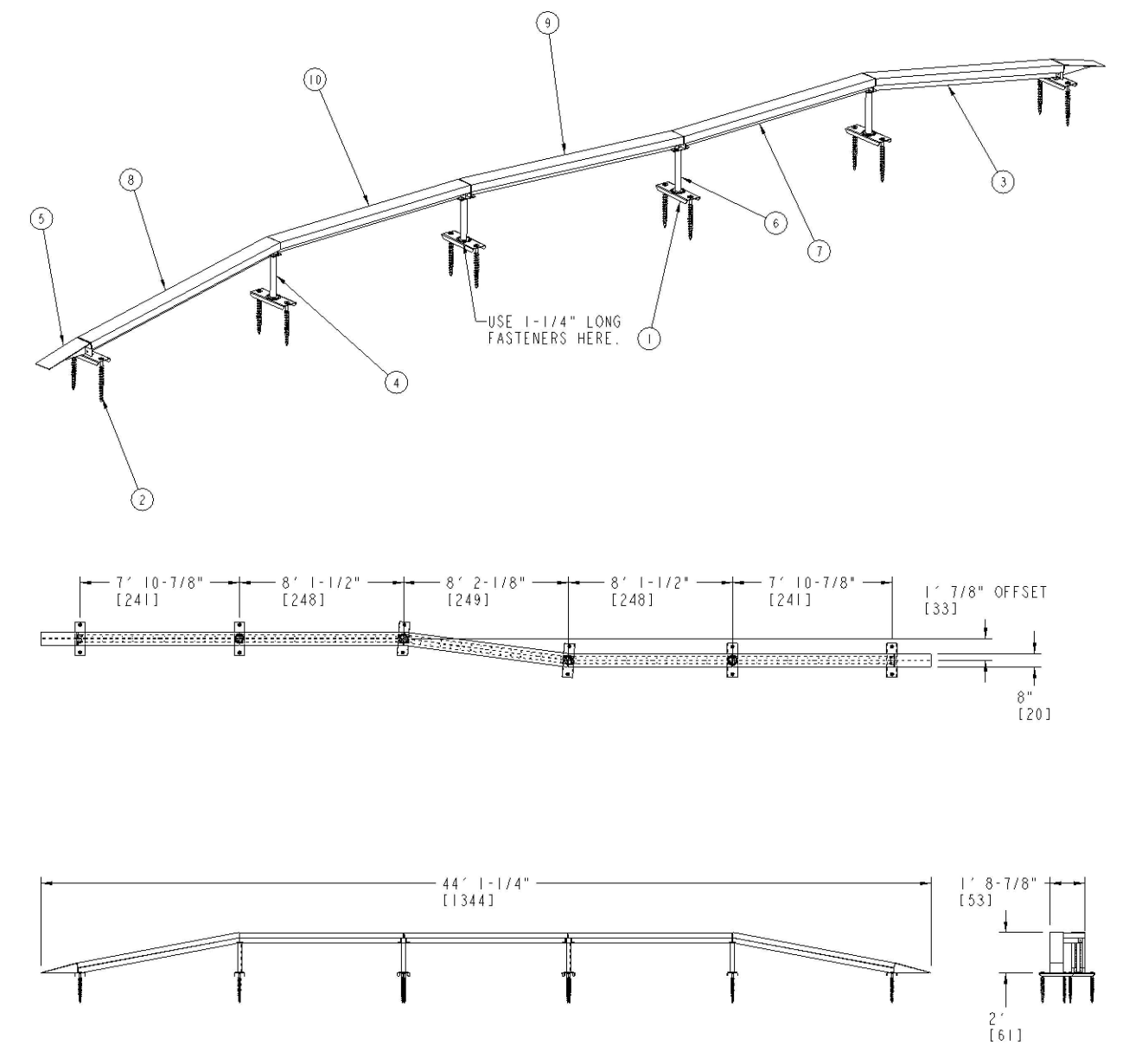
PLAN



SECTION

- NOTES:
1. END STONES TO HAVE A SMOOTH TRANSITION FROM TRAIL TO ROCK CAUSEWAY
 2. STONE SIZES TO VARY TO ACCOMMODATE FEATURE LOCATION ON TRAIL
 3. ALL BOULDER PLACEMENT SHALL BE DONE UNDER SUPERVISION OF OWNER'S REPRESENTATIVE

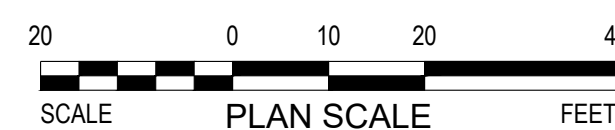
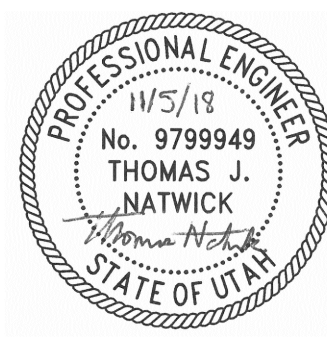
O ROCK DROP
SCALE: N.T.S.



- NOTES:
1. ANCHOR CHANNEL, SKINNY
 3. SKINNY RAMP, 8' LONG, 2' HIGH
 4. SKINNY SUPPORT, 2' OBSTACLE HEIGHT
 5. SKINNY TOE PLATE ASSY, 8"
 6. SKINNY ZIGZAG SUPPORT, 7.5 DEG, 2' HIGH
 7. SKINNY, STRAIGHT, 8'
 8. SPECIAL WOOD, SKINNY A-FRAME, 2' HIGH, 3 X 8
 9. SPECIAL WOOD, SKINNY, 3X8, ZIG ZAG OFFSET, CENTER
 10. SPECIAL WOOD, SKINNY, 3X8, ZIG ZAG MELLOW, END
 11. MANUFACTURER: PROGRESSIVE BIKE RAMP OR APPROVED EQUAL

Q SKINNY ZIGZAG OFFSET
SCALE: N.T.S.

DESIGNED:	CRW	REVISIONS
REVIEWED:	TJN	NO DATE ITEM
DRAWN:	JJH	
2017-384 PROJECT NO.	11/5/18 DATE	
1" = 20' SCALE	2017-384 Details2 FILE	



Bridger Bike Park
Logan, UT

SITE DETAILS

SHEET NO.

DT03
08 OF **08**